



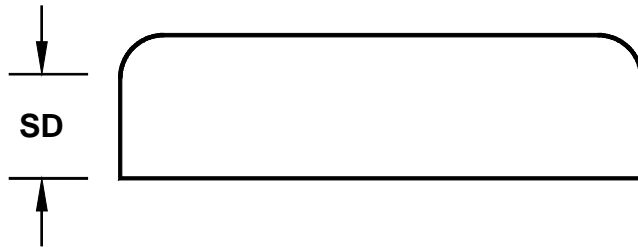
Macon Plastics, Inc.
P. O. Box 95 • Macon, GA 31202
478.743.6828 Fax 478.743.6819

Table of Contents

Cap.....	2	Increaser Coupling.....	15-18
Coupling.....	3	Increaser Bushing.....	19-22
Clean-Out Tee w/plug.....	4	Spigot Plug.....	23
Cross.....	5-8	Tee.....	24-27
22½° Elbow.....	9	Tee Wye.....	28-31
22½° Street Elbow.....	10	Double Tee Wye.....	32-35
45° Elbow.....	11	Sanitary Tee.....	36-39
45° Street Elbow.....	12	Wye.....	40-43
90° Elbow.....	13	Double Wye.....	44-47
90° Street Elbow.....	14		



Macon Plastics, Inc.
P. O. Box 95 • Macon, GA 31202
478.743.6828 Fax 478.743.6819



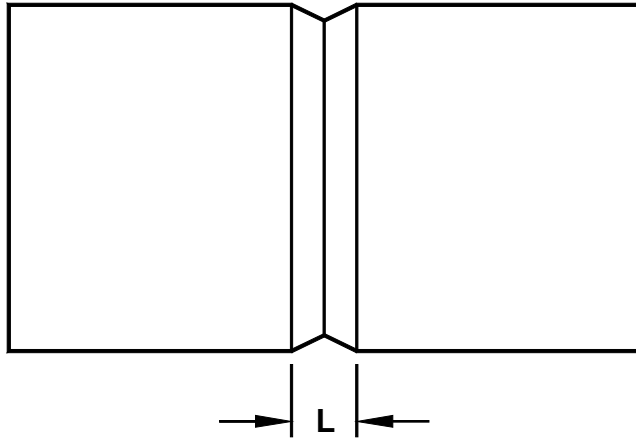
Nominal Size	SD
6 IN	3.13
*8 IN	2.63
*10 IN	2.75
*12 IN	3.25
*14 IN	3.50
*16 IN	4.00
*18 IN	4.50
*20 IN	5.00
*24 IN	5.50

Description: Cap
Material: SCH 40 DWV
Size: (per chart)
Configuration: Hub x Cap

* Dimensions are approximate due to various factors affecting production.
Dimensions are subject to change without notice due to design or production modifications.



Macon Plastics, Inc.
P. O. Box 95 • Macon, GA 31202
478.743.6828 Fax 478.743.6819



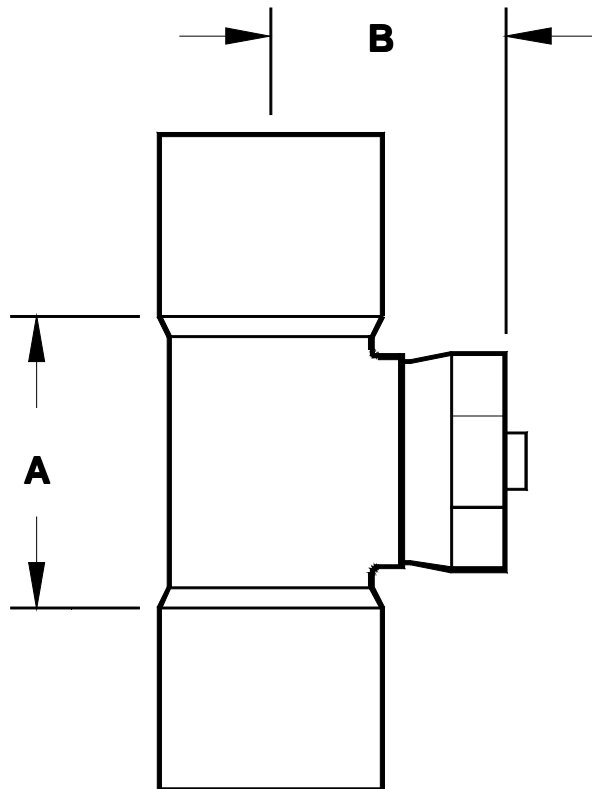
Nominal Size	L
6 IN	0.25
*8 IN	1.25
*10 IN	1.25
*12 IN	1.75
*14 IN	1.75
*16 IN	2.00
*18 IN	2.00
*20 IN	2.50
*24 IN	3.00

Description: **Coupling**
Material: **SCH 40 DWV**
Size: **(per chart)**
Configuration: **Hub x Hub**

* Dimensions are approximate due to various factors affecting production.
Dimensions are subject to change without notice due to design or production modifications.



Macon Plastics, Inc.
 P. O. Box 95 • Macon, GA 31202
 478.743.6828 Fax 478.743.6819



Nominal Size	A	B
*6x4	8.75	4.94
*6x6	10.00	5.19
*8x4	8.00	5.94
*8x6	9.25	6.19
*8x8	13.25	7.25
*10x4	9.25	7.00
*10x6	10.50	7.25
*10x8	13.25	8.32
*10x10	15.13	9.75
*12x4	8.00	8.00
*12x6	10.50	9.63
*12x8	13.25	9.75
*12x10	15.75	11.13
*12x12	18.00	12.13

Description: Clean-Out Tee with Plug

Material: SCH 40 DWV

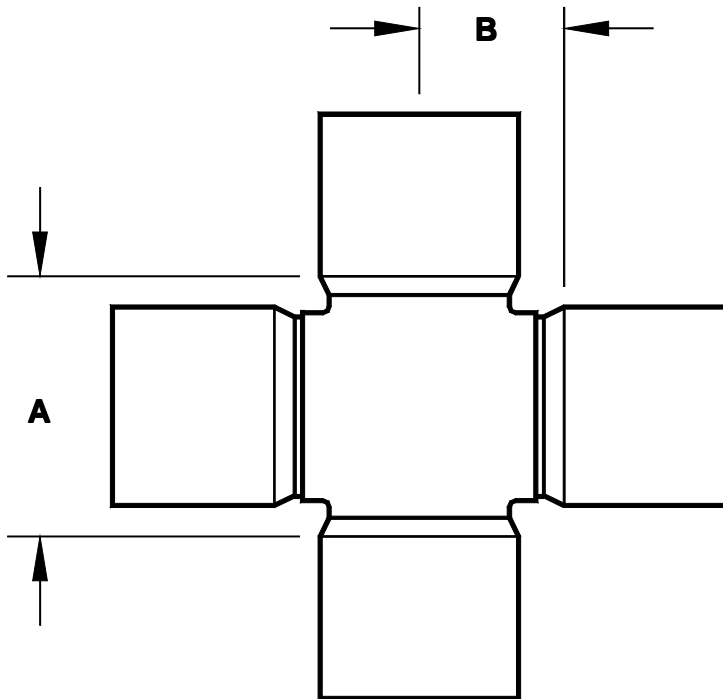
Size: (per chart)

Configuration: Hub x Hub x FIPT

* Dimensions are approximate due to various factors affecting production.
 Dimensions are subject to change without notice due to design or production modifications.



Macon Plastics, Inc.
P. O. Box 95 • Macon, GA 31202
478.743.6828 Fax 478.743.6819



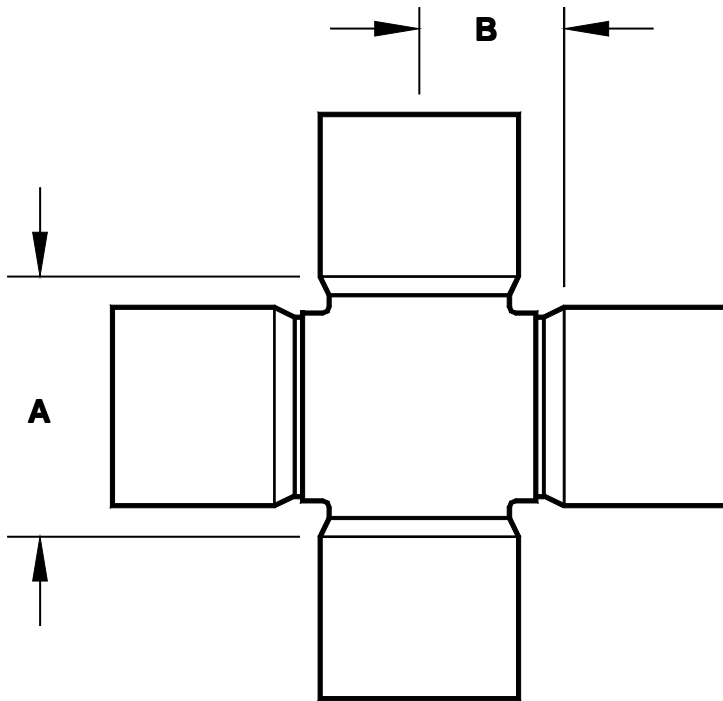
Nominal Size	A	B
*6x4	8.75	5.05
*6x6	10.00	5.31
*8x4	8.75	6.05
*8x6	10.00	6.31
*8x8	13.25	6.80
*10x4	8.75	7.12
*10x6	10.00	7.38
*10x8	13.25	7.88
*10x10	15.13	8.00
*12x4	8.75	8.13
*12x6	10.00	8.38
*12x8	13.25	8.88
*12x10	15.13	9.00
*12x12	18.00	9.13

Description: Cross
Material: SCH 40 DWV
Size: (per chart)
Configuration: Hub x Hub x Hub x Hub

* Dimensions are approximate due to various factors affecting production.
Dimensions are subject to change without notice due to design or production modifications.



Macon Plastics, Inc.
P. O. Box 95 • Macon, GA 31202
478.743.6828 Fax 478.743.6819



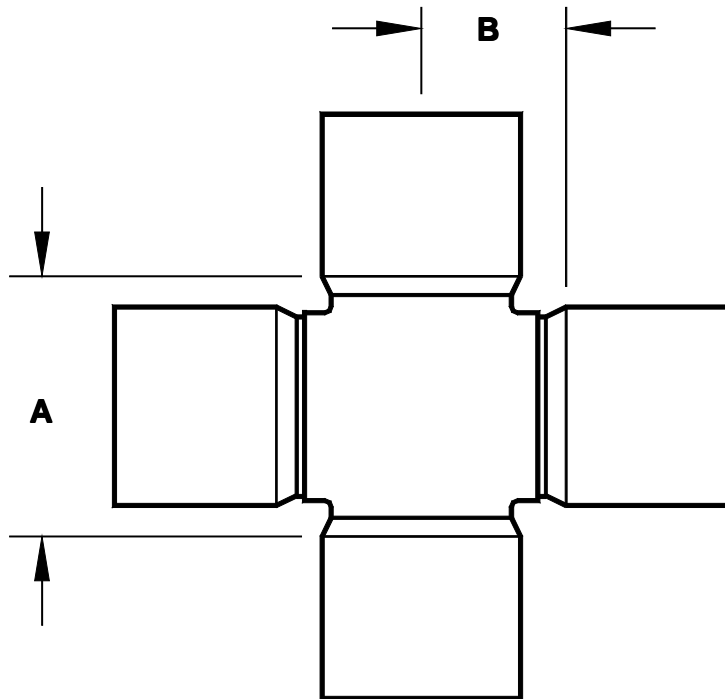
Nominal Size	A	B
*14x4	8.75	8.75
*14x6	10.00	9.00
*14x8	13.25	9.50
*14x10	15.13	9.63
*14x12	18.00	9.75
*14x14	19.50	10.25
*16x4	8.75	9.75
*16x6	10.00	10.00
*16x8	13.25	10.50
*16x10	15.13	10.63
*16x12	18.00	10.75
*16x14	19.50	11.25
*16x16	21.25	11.88

Description: Cross
Material: SCH 40 DWV
Size: (per chart)
Configuration: Hub x Hub x Hub x Hub

* Dimensions are approximate due to various factors affecting production.
Dimensions are subject to change without notice due to design or production modifications.



Macon Plastics, Inc.
P. O. Box 95 • Macon, GA 31202
478.743.6828 Fax 478.743.6819



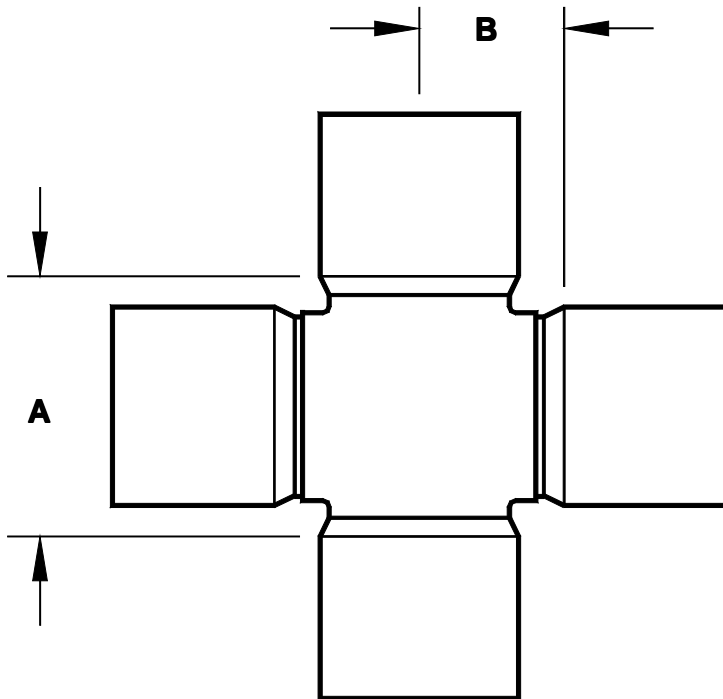
Nominal Size	A	B
*18x4	8.75	10.75
*18x6	10.00	11.00
*18x8	13.25	11.50
*18x10	15.13	11.63
*18x12	18.00	11.75
*18x14	19.50	12.25
*18x16	21.25	12.88
*18x18	24.50	13.50
*20x4	8.75	11.75
*20x6	10.00	12.00
*20x8	13.25	12.50
*20x10	15.13	12.63
*20x12	18.00	21.75

Description: Cross
Material: SCH 40 DWV
Size: (per chart)
Configuration: Hub x Hub x Hub x Hub

* Dimensions are approximate due to various factors affecting production.
Dimensions are subject to change without notice due to design or production modifications.



Macon Plastics, Inc.
P. O. Box 95 • Macon, GA 31202
478.743.6828 Fax 478.743.6819



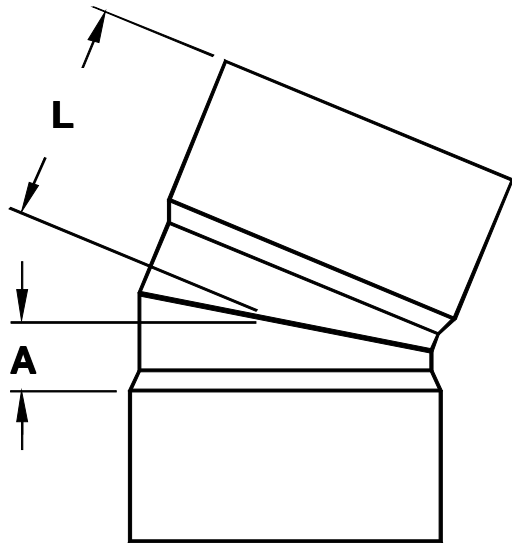
Nominal Size	A	B
*20x14	19.50	13.25
*20x16	21.25	13.88
*20x18	24.50	14.50
*20x20	27.00	16.00
*24x4	8.75	13.75
*24x6	10.00	14.00
*24x8	13.25	14.50
*24x10	15.13	14.63
*24x12	18.00	14.75
*24x14	19.50	15.25
*24x16	21.25	15.88
*24x18	24.50	16.50
*24x20	27.00	18.00
*24x24	32.50	20.00

Description: Cross
Material: SCH 40 DWV
Size: (per chart)
Configuration: Hub x Hub x Hub x Hub

* Dimensions are approximate due to various factors affecting production.
Dimensions are subject to change without notice due to design or production modifications.



Macon Plastics, Inc.
P. O. Box 95 • Macon, GA 31202
478.743.6828 Fax 478.743.6819



Nominal Size	L	A
*6 IN	4.25	1.25
*8 IN	6.25	2.25
*10 IN	8.00	3.00
*12 IN	9.00	3.00
*14 IN	10.50	3.50
*16 IN	12.00	4.00
*18 IN	13.25	4.25
*20 IN	14.75	4.75
*24 IN	16.88	4.88

Description: 22½ Degree Elbow

Material: SCH 40 DWV

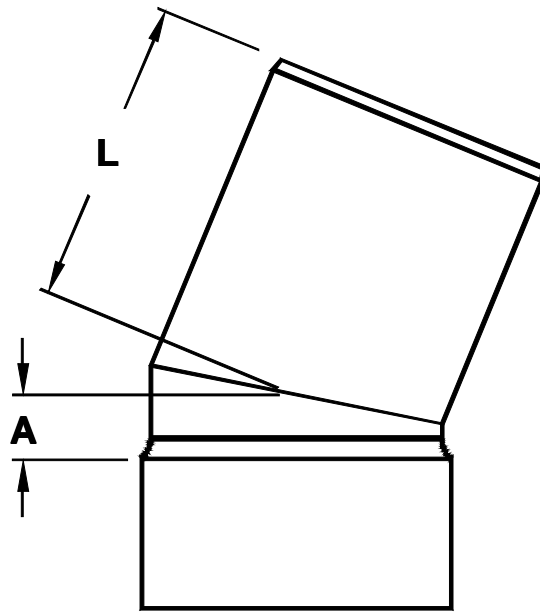
Size: (per chart)

Configuration: Hub x Hub

* Dimensions are approximate due to various factors affecting production.
Dimensions are subject to change without notice due to design or production modifications.



Macon Plastics, Inc.
P. O. Box 95 • Macon, GA 31202
478.743.6828 Fax 478.743.6819



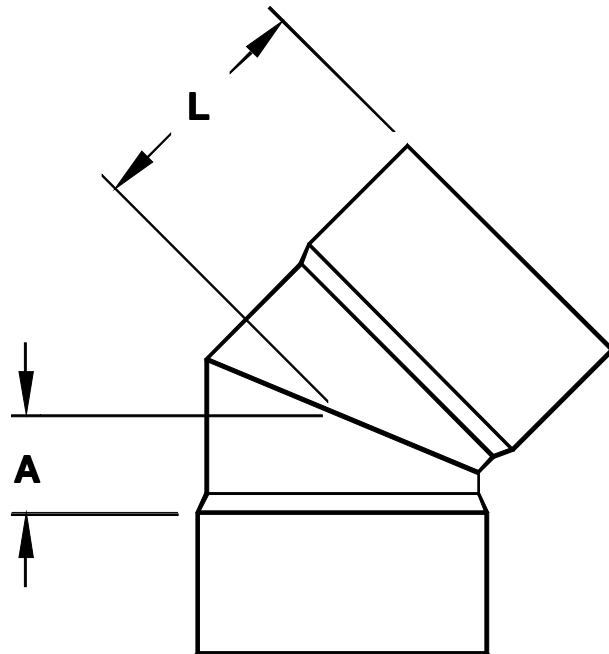
Nominal Size	L	A
*6 IN	6.63	1.25
*8 IN	6.86	2.25
*10 IN	8.50	3.00
*12 IN	9.75	3.00
*14 IN	10.50	3.50
*16 IN	11.65	4.00
*18 IN	13.80	4.25
*20 IN	15.00	4.75
*24 IN	16.50	4.88

Description: 22½ Degree Street Elbow
Material: SCH 40 DWV
Size: (per chart)
Configuration: Male x Hub

* Dimensions are approximate due to various factors affecting production.
Dimensions are subject to change without notice due to design or production modifications.



Macon Plastics, Inc.
P. O. Box 95 • Macon, GA 31202
478.743.6828 Fax 478.743.6819



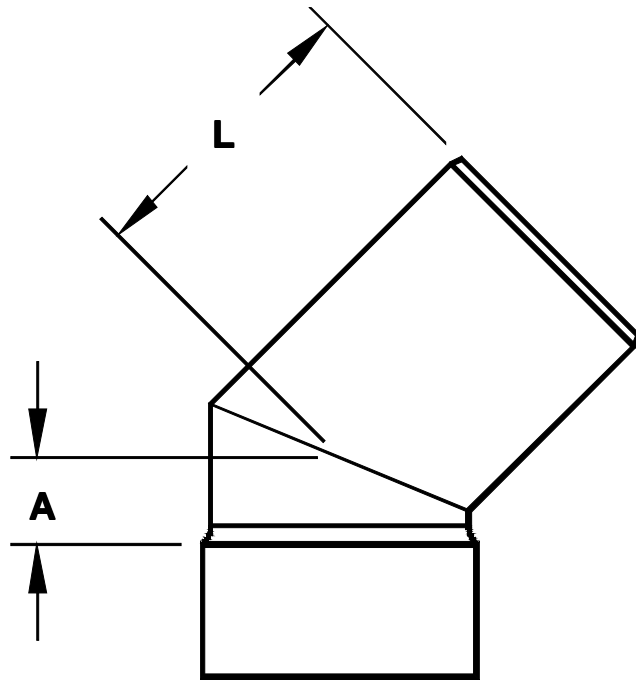
Nominal Size	L	A
*6 IN	6.25	3.25
*8 IN	7.50	3.50
*10 IN	9.00	4.00
*12 IN	10.25	4.25
*14 IN	11.50	4.50
*16 IN	12.75	4.75
*18 IN	14.75	5.75
*20 IN	16.00	6.00
*24 IN	19.50	7.50

Description: 45 Degree Elbow
Material: SCH 40 DWV
Size: (per chart)
Configuration: Hub x Hub

* Dimensions are approximate due to various factors affecting production.
Dimensions are subject to change without notice due to design or production modifications.



Macon Plastics, Inc.
P. O. Box 95 • Macon, GA 31202
478.743.6828 Fax 478.743.6819



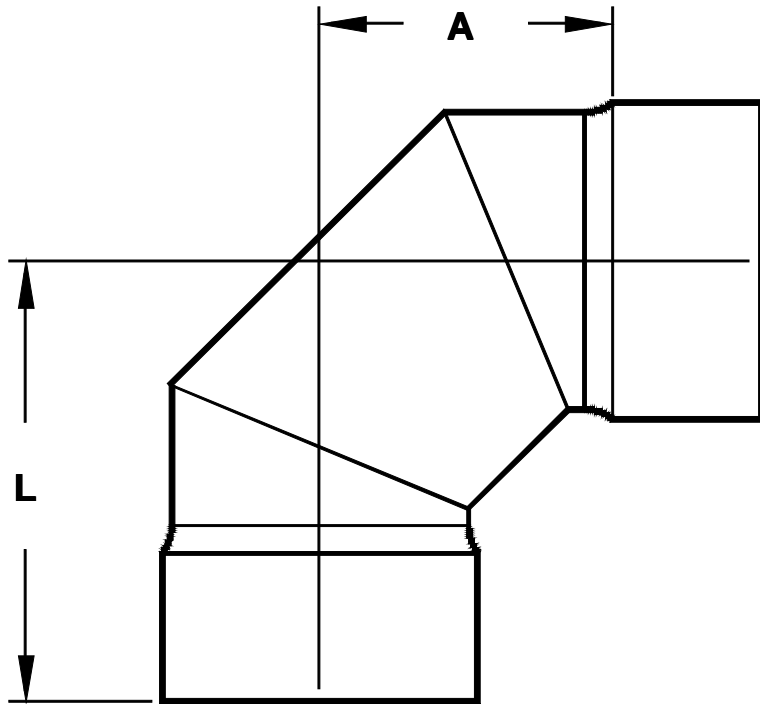
Nominal Size	L	A
*6 IN	7.38	3.25
*8 IN	7.79	3.50
*10 IN	9.73	4.00
*12 IN	11.14	4.25
*14 IN	12.00	4.50
*16 IN	13.50	4.75
*18 IN	15.75	5.75
*20 IN	16.00	6.00
*24 IN	19.00	7.50

Description: 45 Degree Street Elbow
Material: SCH 40 DWV
Size: (per chart)
Configuration: Male x Hub

* Dimensions are approximate due to various factors affecting production.
Dimensions are subject to change without notice due to design or production modifications.



Macon Plastics, Inc.
P. O. Box 95 • Macon, GA 31202
478.743.6828 Fax 478.743.6819



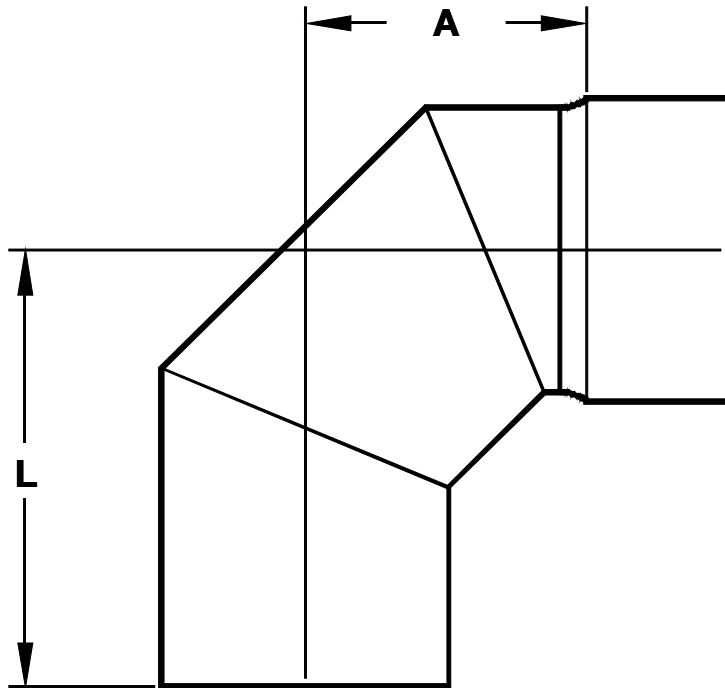
Nominal Size	L	A
*6 IN	10.50	7.00
*8 IN	11.50	7.00
*10 IN	15.13	10.13
*12 IN	18.00	12.00
*14 IN	20.00	13.00
*16 IN	23.00	15.00
*18 IN	32.00	23.00
*20 IN	32.75	22.75
*24 IN	42.50	32.50

Description: 90 Degree Elbow
Material: SCH 40 DWV
Size: (per chart)
Configuration: Hub x Hub

* Dimensions are approximate due to various factors affecting production.
Dimensions are subject to change without notice due to design or production modifications.



Macon Plastics, Inc.
P. O. Box 95 • Macon, GA 31202
478.743.6828 Fax 478.743.6819



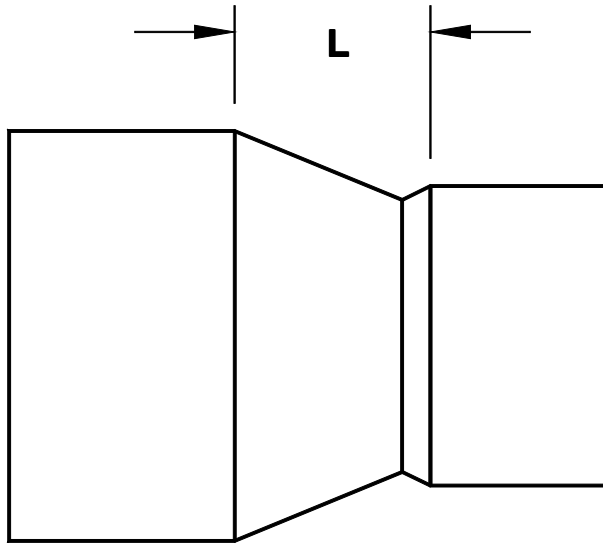
Nominal Size	L	A
*8 IN	13.00	7.00
*10 IN	15.13	10.13
*12 IN	18.00	12.00
*14 IN	20.00	13.00
*16 IN	23.00	15.00
*18 IN	32.00	23.00
*20 IN	32.75	22.75
*24 IN	42.50	32.50

Description: 90 Degree Street Elbow
Material: SCH 40 DWV
Size: (per chart)
Configuration: Male x Hub

* Dimensions are approximate due to various factors affecting production.
Dimensions are subject to change without notice due to design or production modifications.



Macon Plastics, Inc.
P. O. Box 95 • Macon, GA 31202
478.743.6828 Fax 478.743.6819



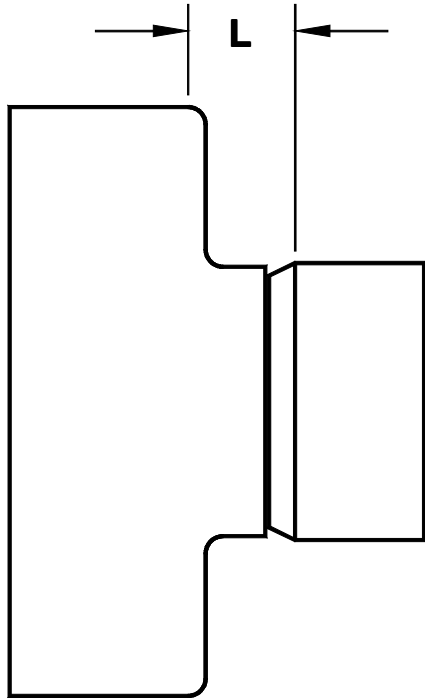
Nominal Size	L
*6x4	2.00
*8x4	4.00
*8x6	3.00
*10x6	4.00
*10x8	3.25
*12x8	5.50
*12x10	3.50
*14x10	5.75
*14x12	2.50
*16x12	5.00
*16x14	4.00
*18x14	7.25
*18x16	3.75
*20x16	7.50
*20x18	3.50
*24x18	7.50
*24x20	3.50

Description: **Increaser Coupling**
Material: **SCH 40 DWV**
Size: **(per chart)**
Configuration: **Hub x Hub**

* Dimensions are approximate due to various factors affecting production.
Dimensions are subject to change without notice due to design or production modifications.



Macon Plastics, Inc.
P. O. Box 95 • Macon, GA 31202
478.743.6828 Fax 478.743.6819



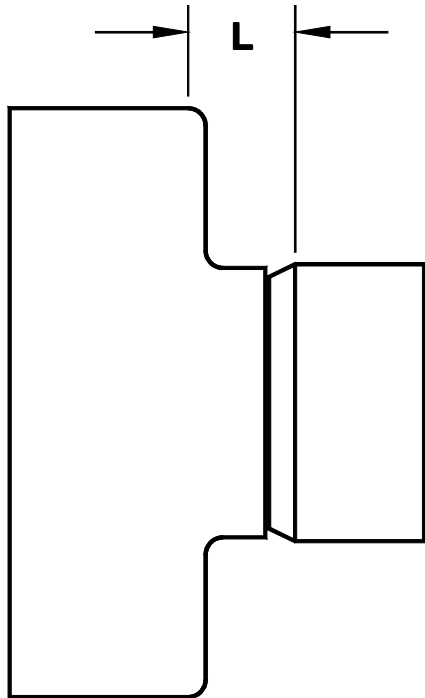
Nominal Size	L
*12x6	3.50
*14x4	3.50
*14x6	3.75
*16x4	3.75
*16x6	4.00
*18x4	3.75
*18x6	4.00
*18x8	4.50
*20x4	3.50
*20x6	4.00
*20x8	4.25
*20x10	4.25

Description: **Increaser Coupling**
Material: **SCH 40 DWV**
Size: **(per chart)**
Configuration: **Hub x Hub**

* Dimensions are approximate due to various factors affecting production.
Dimensions are subject to change without notice due to design or production modifications.



Macon Plastics, Inc.
P. O. Box 95 • Macon, GA 31202
478.743.6828 Fax 478.743.6819



Nominal Size	L
*24x4	4.50
*24x6	4.75
*24x8	5.25
*24x10	5.63
*24x12	6.50
*24x14	7.00

Description: **Increaser Coupling**

Material: **SCH 40 DWV**

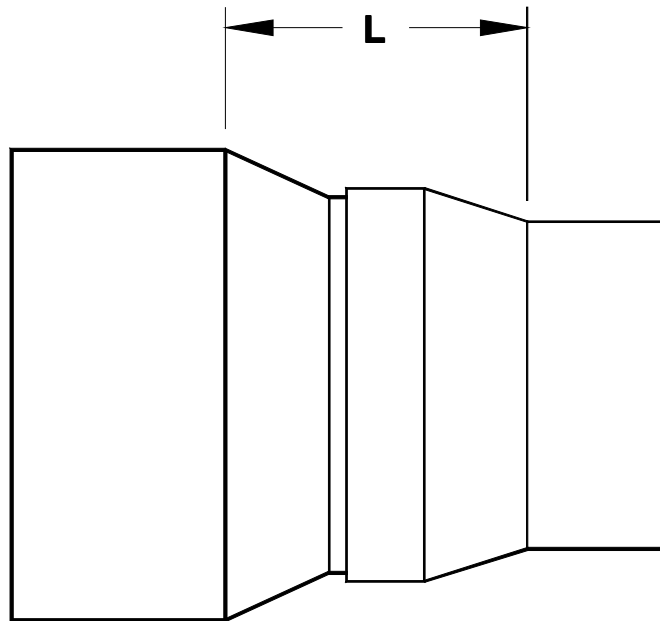
Size: **(per chart)**

Configuration: **Hub x Hub**

* Dimensions are approximate due to various factors affecting production.
Dimensions are subject to change without notice due to design or production modifications.



Macon Plastics, Inc.
P. O. Box 95 • Macon, GA 31202
478.743.6828 Fax 478.743.6819



Nominal Size	L
*10x4	7.50
*12x4	10.25
*12x6	9.00
*14x8	10.00
*16x8	10.50
*16x10	9.50
*18x10	13.50
*18x12	12.00
*20x12	11.25
*20x14	10.50
*24x14	15.00
*24x16	13.00

Description: Increaser Coupling

Material: SCH 40 DWV

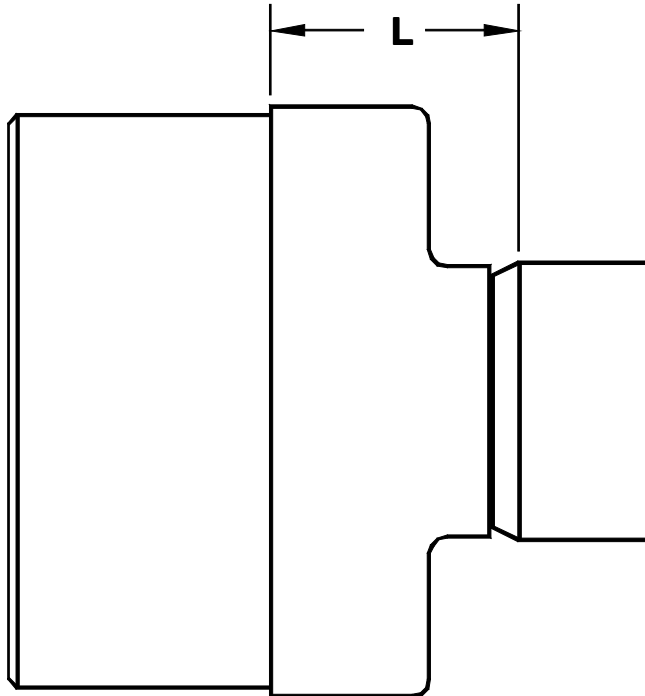
Size: (per chart)

Configuration: Hub x Hub

* Dimensions are approximate due to various factors affecting production.
Dimensions are subject to change without notice due to design or production modifications.



Macon Plastics, Inc.
P. O. Box 95 • Macon, GA 31202
478.743.6828 Fax 478.743.6819



Nominal Size	L
*12x6	7.50
*14x4	7.50
*14x6	7.75
*16x4	7.75
*16x6	8.00
*18x4	7.75
*18x6	8.00
*18x8	8.50
*20x4	7.75
*20x6	8.25
*20x8	8.50
*20x10	9.00

Description: Increaser Bushing

Material: SCH 40 DWV

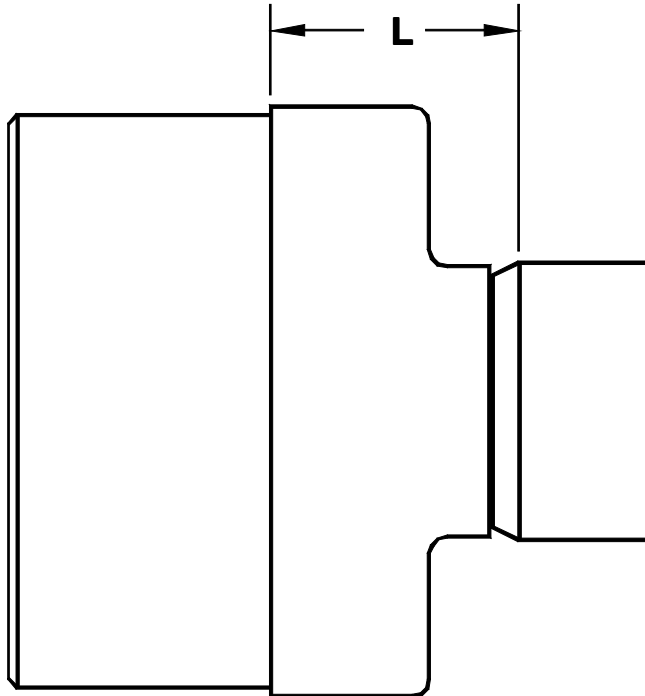
Size: (per chart)

Configuration: Male x Hub

* Dimensions are approximate due to various factors affecting production.
Dimensions are subject to change without notice due to design or production modifications.



Macon Plastics, Inc.
P. O. Box 95 • Macon, GA 31202
478.743.6828 Fax 478.743.6819



Nominal Size	L
*24x4	9.50
*24x6	9.75
*24x8	10.75
*24x10	10.88
*24x12	11.50
*24x14	12.38

Description: **Increaser Bushing**

Material: **SCH 40 DWV**

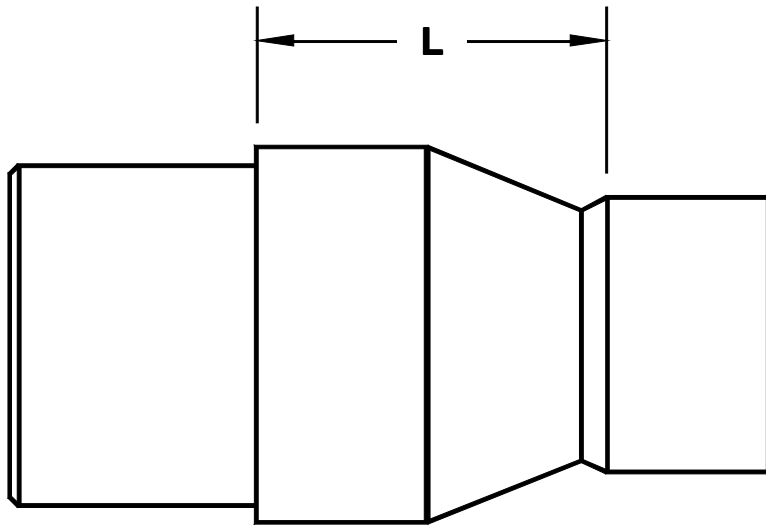
Size: **(per chart)**

Configuration: **Male x Hub**

* Dimensions are approximate due to various factors affecting production.
Dimensions are subject to change without notice due to design or production modifications.



Macon Plastics, Inc.
P. O. Box 95 • Macon, GA 31202
478.743.6828 Fax 478.743.6819



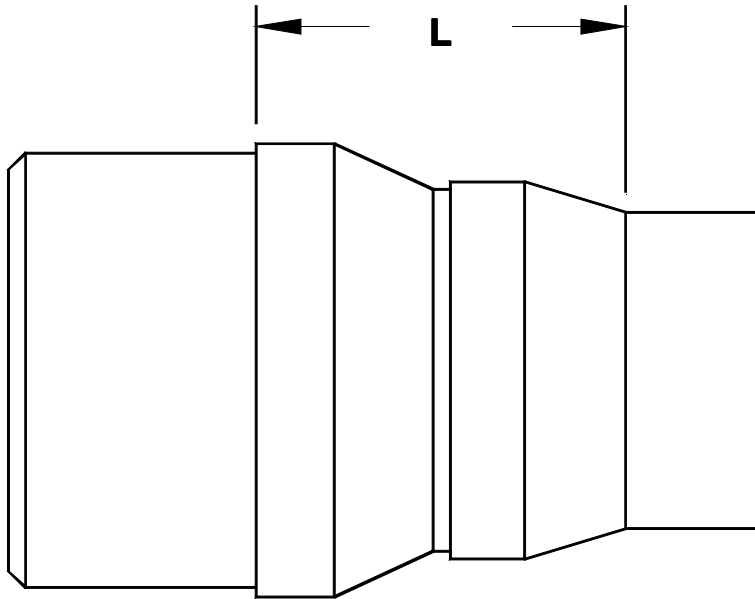
Nominal Size	L
*6x4	4.25
*8x4	5.50
*8x6	5.00
*10x6	6.00
*10x8	5.00
*12x8	7.50
*12x10	5.50
*14x10	6.50
*14x12	5.00
*16x12	8.25
*16x14	6.00
*18x14	10.00
*18x16	7.00
*20x16	10.00
*20x18	7.00
*24x18	10.00
*24x20	7.00

Description: Increaser Bushing
Material: SCH 40 DWV
Size: (per chart)
Configuration: Male x Hub

* Dimensions are approximate due to various factors affecting production.
Dimensions are subject to change without notice due to design or production modifications.



Macon Plastics, Inc.
P. O. Box 95 • Macon, GA 31202
478.743.6828 Fax 478.743.6819



Nominal Size	L
*10x4	9.25
*12x4	9.50
*12x6	9.50
*14x8	10.75
*16x8	10.75
*16x10	8.50
*18x10	10.50
*18x12	11.00
*20x12	12.00
*20x14	11.50
*24x14	14.50
*24x16	14.50

Description: Increaser Bushing

Material: SCH 40 DWV

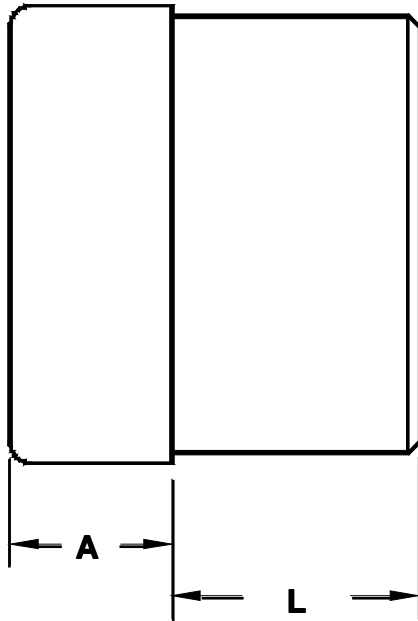
Size: (per chart)

Configuration: Male x Hub

* Dimensions are approximate due to various factors affecting production.
Dimensions are subject to change without notice due to design or production modifications.



Macon Plastics, Inc.
P. O. Box 95 • Macon, GA 31202
478.743.6828 Fax 478.743.6819



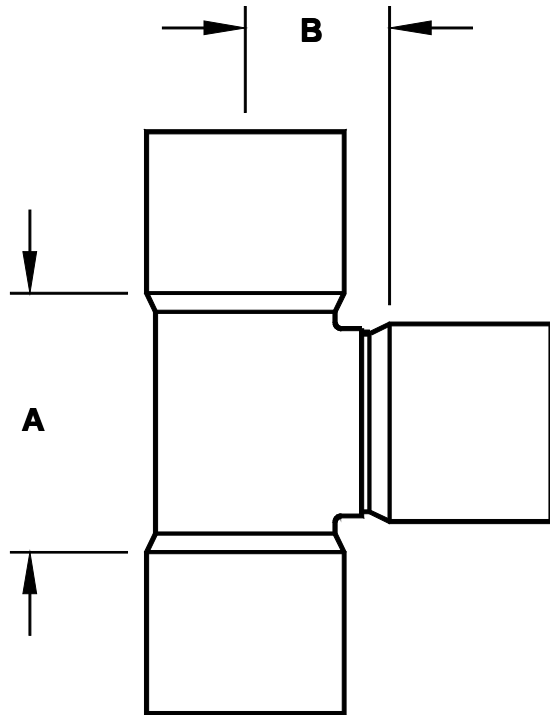
Nominal Size	L	A
*6	6.00	3.50
*8	6.00	3.50
*10	7.50	3.50
*12	8.50	4.50
*14	9.00	5.25
*16	10.00	5.50
*18	12.00	6.25
*20	12.00	6.50
*24	14.00	6.50

Description: **Spigot Plug**
Material: **SCH 40 DWV**
Size: **(per chart)**
Configuration: **Cap x Male**

* Dimensions are approximate due to various factors affecting production.
Dimensions are subject to change without notice due to design or production modifications.



Macon Plastics, Inc.
 P. O. Box 95 • Macon, GA 31202
 478.743.6828 Fax 478.743.6819



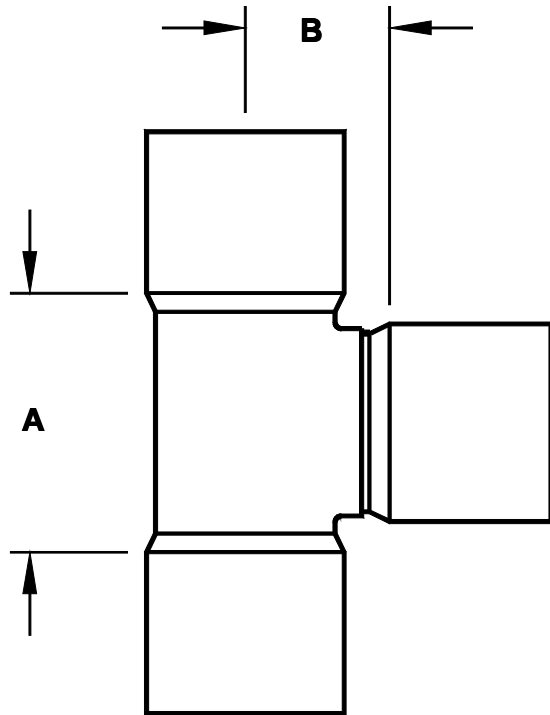
Nominal Size	A	B
*6x4	8.75	5.05
*6x6	10.00	5.31
*8x4	8.75	6.05
*8x6	10.00	6.31
*8x8	13.25	6.80
*10x4	8.75	7.12
*10x6	10.00	7.38
*10x8	13.25	7.88
*10x10	15.13	8.00
*12x4	8.75	8.13
*12x6	10.00	8.38
*12x8	13.25	8.88
*12x10	15.13	9.00
*12x12	18.00	9.13

Description: Tee
Material: SCH 40 DWV
Size: (per chart)
Configuration: Hub x Hub x Hub

* Dimensions are approximate due to various factors affecting production.
 Dimensions are subject to change without notice due to design or production modifications.



Macon Plastics, Inc.
P. O. Box 95 • Macon, GA 31202
478.743.6828 Fax 478.743.6819



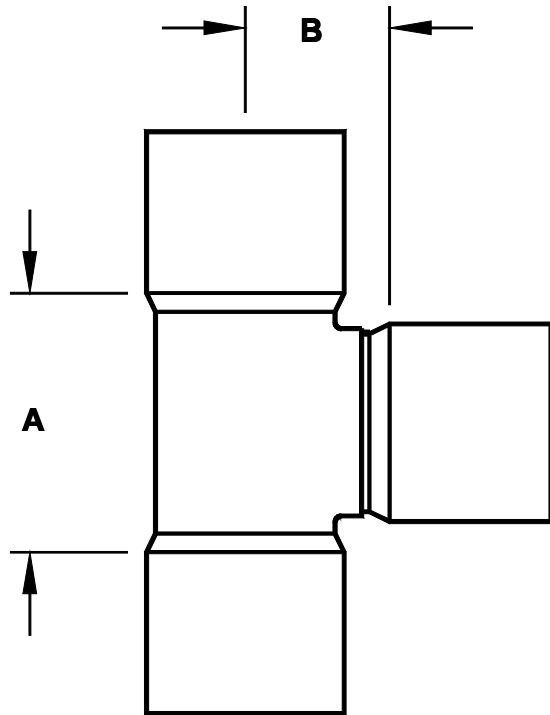
Nominal Size	A	B
*14x4	8.75	8.75
*14x6	10.00	9.00
*14x8	13.25	9.50
*14x10	15.13	9.63
*14x12	18.00	9.75
*14x14	19.50	10.25
*16x4	8.75	9.75
*16x6	10.00	10.00
*16x8	13.25	10.50
*16x10	15.13	10.63
*16x12	18.00	10.75
*16x14	19.50	11.25
*16x16	21.25	11.88

Description: Tee
Material: SCH 40 DWV
Size: (per chart)
Configuration: Hub x Hub x Hub

* Dimensions are approximate due to various factors affecting production.
Dimensions are subject to change without notice due to design or production modifications.



Macon Plastics, Inc.
 P. O. Box 95 • Macon, GA 31202
 478.743.6828 Fax 478.743.6819



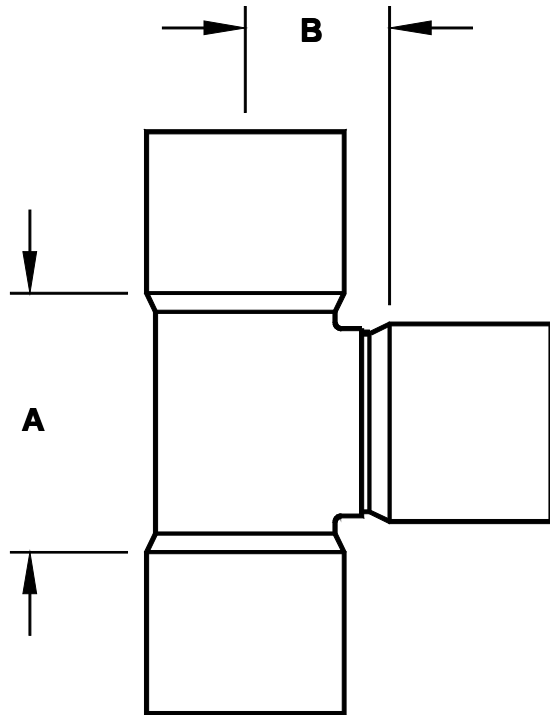
Nominal Size	A	B
*18x4	8.75	10.75
*18x6	10.00	11.00
*18x8	13.25	11.50
*18x10	15.13	11.63
*18x12	18.00	11.75
*18x14	19.50	12.25
*18x16	21.25	12.88
*18x18	24.50	13.50
*20x4	8.75	11.75
*20x6	10.00	12.00
*20x8	13.25	12.50
*20x10	15.13	12.63
*20x12	18.00	21.75

Description: Tee
Material: SCH 40 DWV
Size: (per chart)
Configuration: Hub x Hub x Hub

* Dimensions are approximate due to various factors affecting production.
 Dimensions are subject to change without notice due to design or production modifications.



Macon Plastics, Inc.
 P. O. Box 95 • Macon, GA 31202
 478.743.6828 Fax 478.743.6819



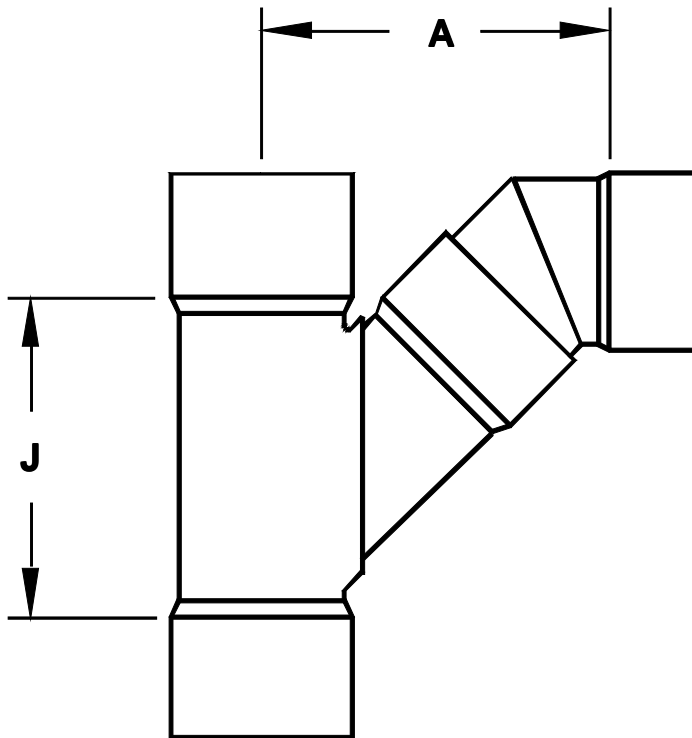
Nominal Size	A	B
*20x14	19.50	13.25
*20x16	21.25	13.88
*20x18	24.50	14.50
*20x20	27.00	16.00
*24x4	8.75	13.75
*24x6	10.00	14.00
*24x8	13.25	14.50
*24x10	15.13	14.63
*24x12	18.00	14.75
*24x14	19.50	15.25
*24x16	21.25	15.88
*24x18	24.50	16.50
*24x20	27.00	18.00
*24x24	32.50	20.00

Description: Tee
Material: SCH 40 DWV
Size: (per chart)
Configuration: Hub x Hub x Hub

* Dimensions are approximate due to various factors affecting production.
 Dimensions are subject to change without notice due to design or production modifications.



Macon Plastics, Inc.
 P. O. Box 95 • Macon, GA 31202
 478.743.6828 Fax 478.743.6819



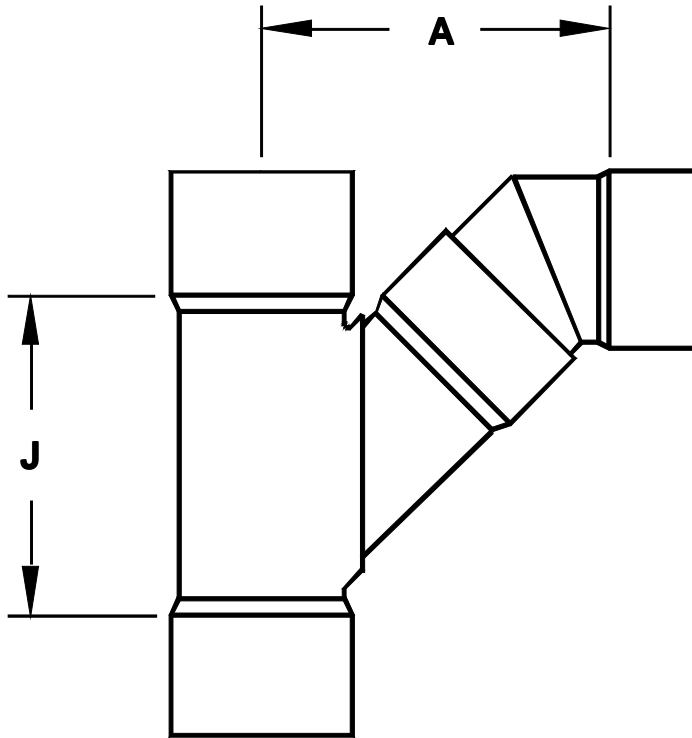
Nominal Size	A	J
6x4	10.13	6.94
*6x6	11.38	8.38
*8x4	13.00	12.25
*8x6	14.50	14.25
*8x8	18.00	17.25
*10x4	11.25	11.25
*10x6	12.75	14.25
*10x8	17.25	19.25
*10x10	21.25	22.13
*12x4	14.50	10.25
*12x6	16.50	15.25
*12x8	19.25	17.25
*12x10	21.50	20.25
*12x12	26.25	24.75
*14x4	16.75	10.50
*14x6	17.00	14.00
*14x8	20.50	16.50

Description: Tee Wye (Combo)
Material: SCH 40 DWV
Size: (per chart)
Configuration: Hub x Hub x Hub

* Dimensions are approximate due to various factors affecting production.
 Dimensions are subject to change without notice due to design or production modifications.



Macon Plastics, Inc.
 P. O. Box 95 • Macon, GA 31202
 478.743.6828 Fax 478.743.6819



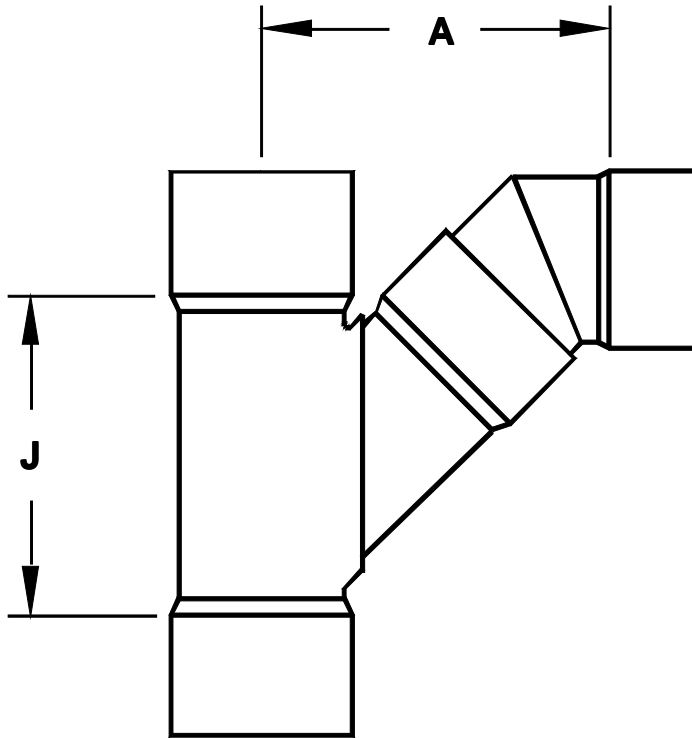
Nominal Size	A	J
*14x10	23.00	20.50
*14x12	24.50	24.75
*14x14	26.50	28.75
*16x4	15.50	11.00
*16x6	19.50	16.00
*16x8	21.50	17.25
*16x10	24.50	22.00
*16x12	26.50	26.00
*16x14	28.50	28.75
*16x16	32.50	32.50
*18x4	16.50	13.50
*18x6	20.50	14.25
*18x8	23.00	16.75
*18x10	26.50	24.00
*18x12	28.50	26.00
*18x14	30.75	29.25
*18x16	32.00	33.50

Description: Tee Wye (Combo)
Material: SCH 40 DWV
Size: (per chart)
Configuration: Hub x Hub x Hub

* Dimensions are approximate due to various factors affecting production.
 Dimensions are subject to change without notice due to design or production modifications.



Macon Plastics, Inc.
 P. O. Box 95 • Macon, GA 31202
 478.743.6828 Fax 478.743.6819



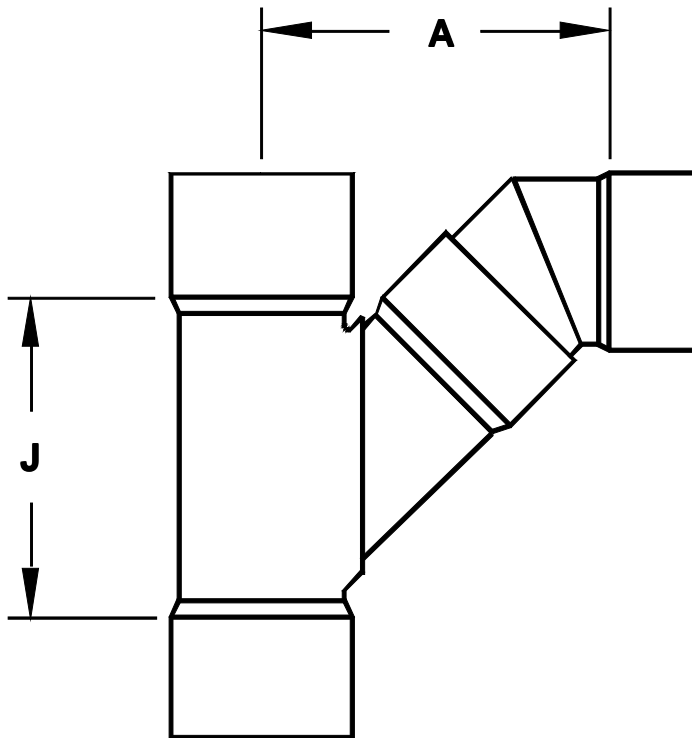
Nominal Size	A	J
*18x18	34.50	36.25
*20x4	17.50	13.50
*20x6	21.50	17.25
*20x8	24.00	20.50
*20x10	27.50	23.00
*20x12	29.50	25.50
*20x14	31.75	28.00
*20x16	33.00	31.00
*20x18	35.50	34.00
*20x20	38.25	37.00
*24x4	19.50	13.50
*24x6	23.50	17.25
*24x8	26.00	17.50
*24x10	29.50	20.50
*24x12	31.50	26.00
*24x14	33.75	28.50
*24x16	35.00	31.50

Description: Tee Wye (Combo)
Material: SCH 40 DWV
Size: (per chart)
Configuration: Hub x Hub x Hub

* Dimensions are approximate due to various factors affecting production.
 Dimensions are subject to change without notice due to design or production modifications.



Macon Plastics, Inc.
P. O. Box 95 • Macon, GA 31202
478.743.6828 Fax 478.743.6819



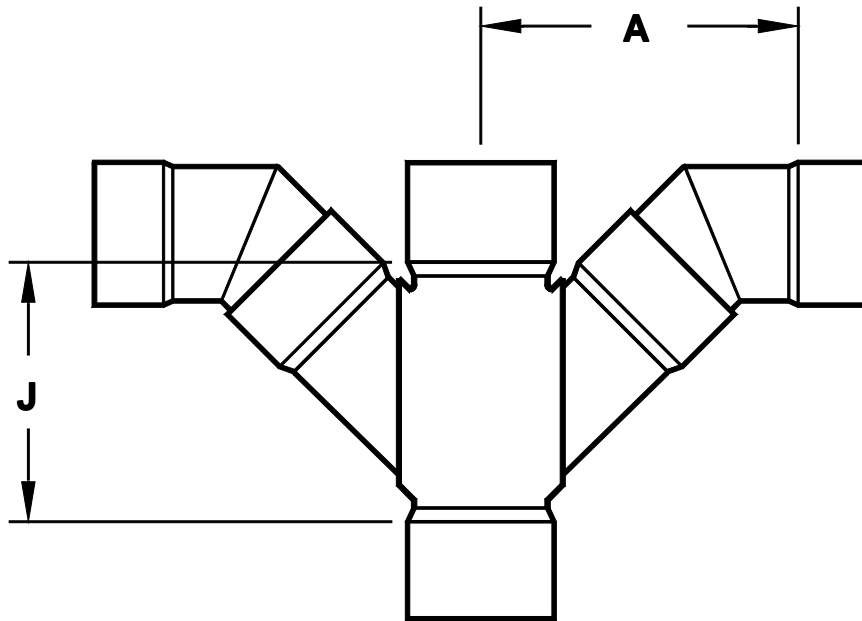
Nominal Size	A	J
*24x18	37.50	34.50
*24x20	40.25	37.50
*24x24	44.00	43.50

Description: Tee Wye (Combo)
Material: SCH 40 DWV
Size: (per chart)
Configuration: Hub x Hub x Hub

* Dimensions are approximate due to various factors affecting production.
Dimensions are subject to change without notice due to design or production modifications.



Macon Plastics, Inc.
 P. O. Box 95 • Macon, GA 31202
 478.743.6828 Fax 478.743.6819



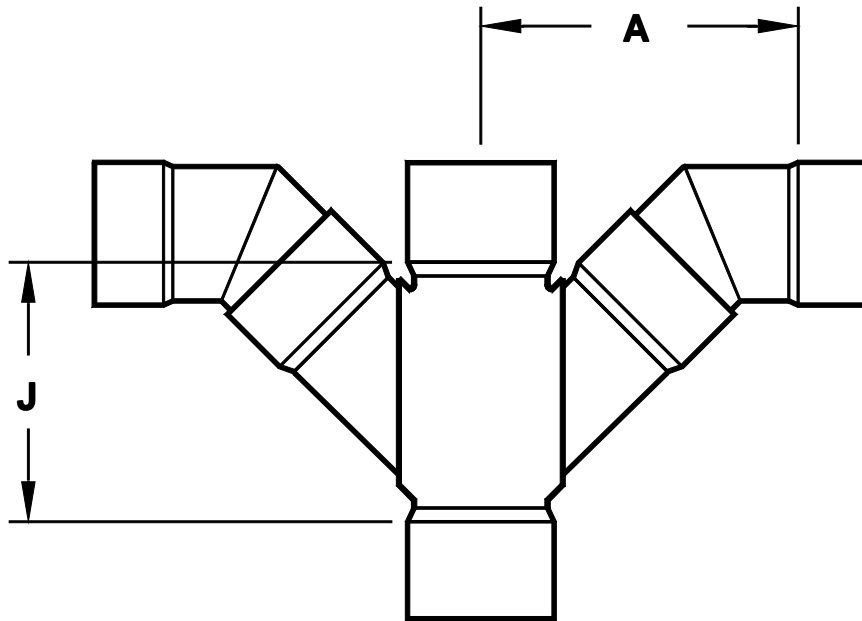
Nominal Size	A	J
6x4	10.13	6.94
*6x6	11.38	8.38
*8x4	13.00	12.25
*8x6	14.50	14.25
*8x8	18.00	17.25
*10x4	11.25	11.25
*10x6	12.75	14.25
*10x8	17.25	19.25
*10x10	21.25	22.13
*12x4	14.50	10.25
*12x6	16.50	15.25
*12x8	19.25	17.25
*12x10	21.50	20.25
*12x12	26.25	24.75
*14x4	16.75	10.50
*14x6	17.00	14.00
*14x8	20.50	16.50

Description: Double Tee Wye (Combo)
Material: SCH 40 DWV
Size: (per chart)
Configuration: Hub x Hub x Hub x Hub

* Dimensions are approximate due to various factors affecting production.
 Dimensions are subject to change without notice due to design or production modifications.



Macon Plastics, Inc.
 P. O. Box 95 • Macon, GA 31202
 478.743.6828 Fax 478.743.6819



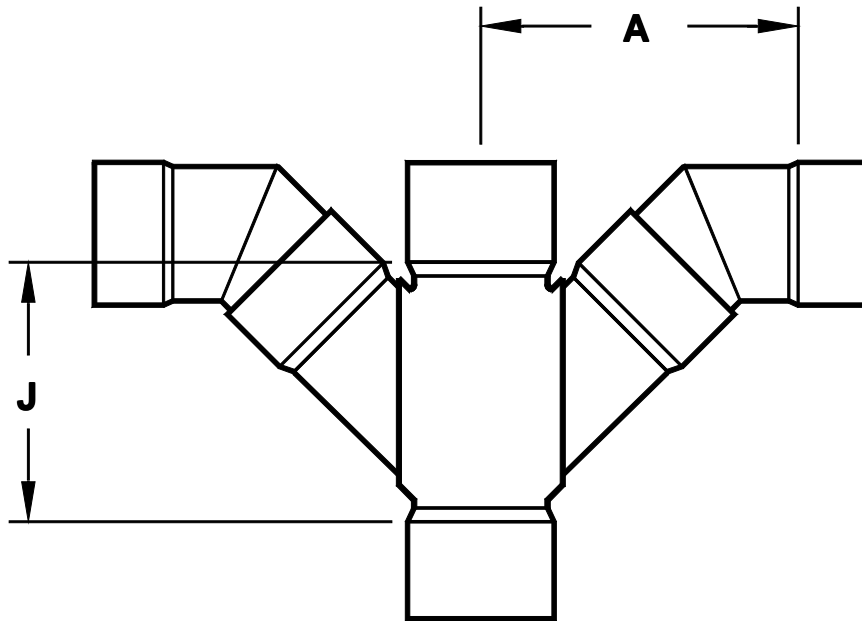
Nominal Size	A	J
*14x10	23.00	20.50
*14x12	24.50	24.75
*14x14	26.50	28.75
*16x4	15.50	11.00
*16x6	19.50	16.00
*16x8	21.50	17.25
*16x10	24.50	22.00
*16x12	26.50	26.00
*16x14	28.50	28.75
*16x16	32.50	32.50
*18x4	16.50	13.50
*18x6	20.50	14.25
*18x8	23.00	16.75
*18x10	26.50	24.00
*18x12	28.50	26.00
*18x14	30.75	29.25
*18x16	32.00	33.50

Description: Double Tee Wye (Combo)
Material: SCH 40 DWV
Size: (per chart)
Configuration: Hub x Hub x Hub x Hub

* Dimensions are approximate due to various factors affecting production.
 Dimensions are subject to change without notice due to design or production modifications.



Macon Plastics, Inc.
P. O. Box 95 • Macon, GA 31202
478.743.6828 Fax 478.743.6819



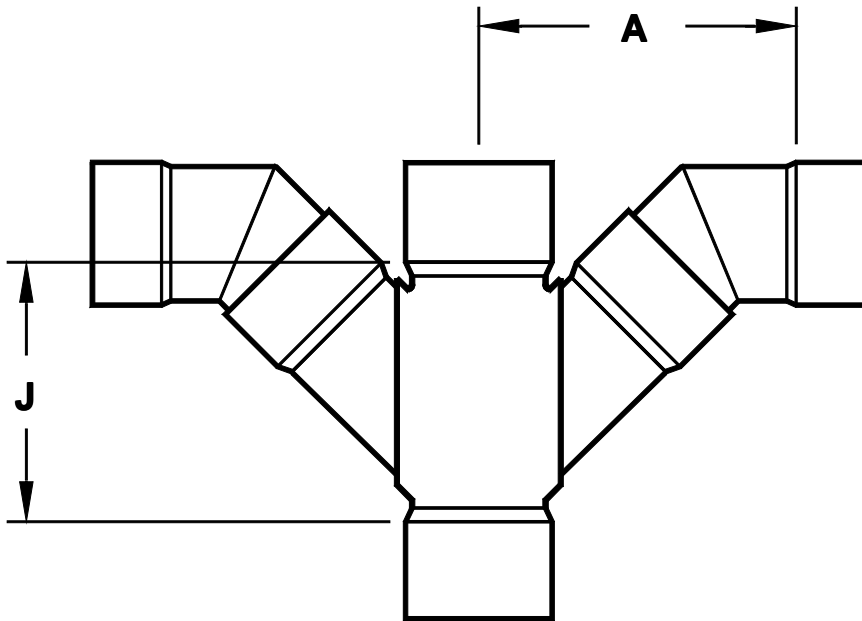
Nominal Size	A	J
*18x18	34.50	36.25
*20x4	17.50	13.50
*20x6	21.50	17.25
*20x8	24.00	20.50
*20x10	27.50	23.00
*20x12	29.50	25.50
*20x14	31.75	28.00
*20x16	33.00	31.00
*20x18	35.50	34.00
*20x20	38.25	37.00
*24x4	19.50	13.50
*24x6	23.50	17.25
*24x8	26.00	17.50
*24x10	29.50	20.50
*24x12	31.50	26.00
*24x14	33.75	28.50
*24x16	35.00	31.50

Description: Double Tee Wye (Combo)
Material: SCH 40 DWV
Size: (per chart)
Configuration: Hub x Hub x Hub x Hub

* Dimensions are approximate due to various factors affecting production.
Dimensions are subject to change without notice due to design or production modifications.



Macon Plastics, Inc.
 P. O. Box 95 • Macon, GA 31202
 478.743.6828 Fax 478.743.6819



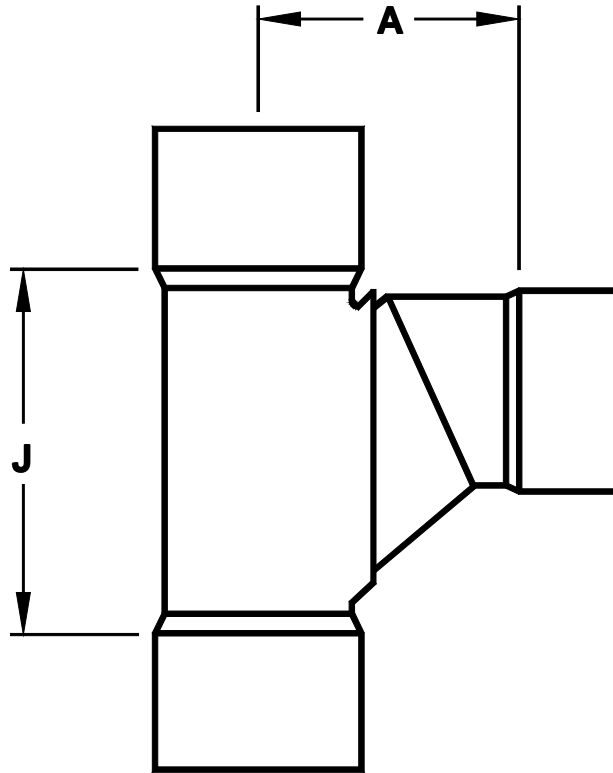
Nominal Size	A	J
*18x18	34.50	36.25
*20x4	17.50	13.50
*20x6	21.50	17.25
*20x8	24.00	20.50
*20x10	27.50	23.00
*20x12	29.50	25.50
*20x14	31.75	28.00
*20x16	33.00	31.00
*20x18	35.50	34.00
*20x20	38.25	37.00
*24x4	19.50	13.50
*24x6	23.50	17.25
*24x8	26.00	17.50
*24x10	29.50	20.50
*24x12	31.50	26.00
*24x14	33.75	28.50
*24x16	35.00	31.50

Description: Double Tee Wye (Combo)
Material: SCH 40 DWV
Size: (per chart)
Configuration: Hub x Hub x Hub x Hub

* Dimensions are approximate due to various factors affecting production.
 Dimensions are subject to change without notice due to design or production modifications.



Macon Plastics, Inc.
 P. O. Box 95 • Macon, GA 31202
 478.743.6828 Fax 478.743.6819



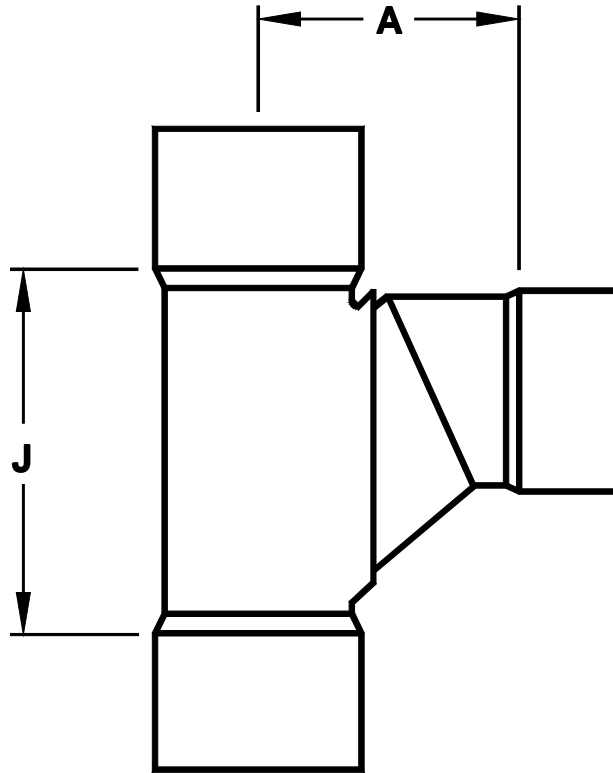
Nominal Size	A	J
6x4	4.44	6.00
6x6	4.81	8.25
*8x4	11.00	12.25
*8x6	8.50	14.25
*8x8	11.75	17.00
*10x4	12.25	11.25
*10x6	9.56	14.25
*10x8	12.00	19.25
*10x10	12.13	22.13
*12x4	13.25	10.25
*12x6	10.63	15.25
*12x8	13.00	17.25
*12x10	13.13	20.25
*12x12	16.00	24.75
*14x4	13.75	10.50
*14x6	11.25	14.00
*14x8	13.50	16.50

Description: **Sanitary Tee**
Material: **SCH 40 DWV**
Size: **(per chart)**
Configuration: **Hub x Hub x Hub**

* Dimensions are approximate due to various factors affecting production.
 Dimensions are subject to change without notice due to design or production modifications.



Macon Plastics, Inc.
 P. O. Box 95 • Macon, GA 31202
 478.743.6828 Fax 478.743.6819



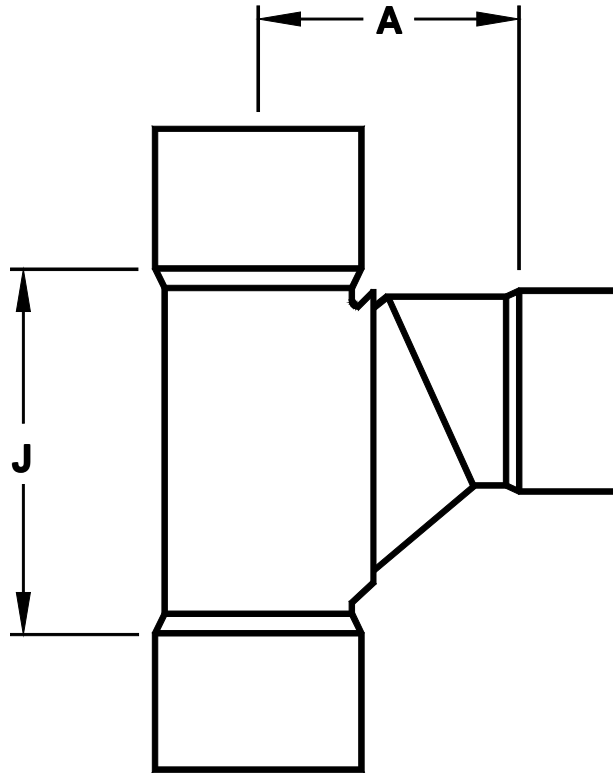
Nominal Size	A	J
*14x10	13.75	20.50
*14x12	16.50	24.75
*14x14	16.75	28.75
*16x4	14.75	11.00
*16x6	12.19	16.00
*16x8	14.50	17.25
*16x10	14.75	22.00
*16x12	17.50	26.00
*16x14	18.00	28.75
*16x16	20.75	32.50
*18x4	15.75	13.50
*18x6	13.25	14.25
*18x8	15.50	16.75
*18x10	15.75	24.00
*18x12	18.50	26.00
*18x14	19.00	29.25
*18x16	22.00	33.50

Description: **Sanitary Tee**
Material: **SCH 40 DWV**
Size: **(per chart)**
Configuration: **Hub x Hub x Hub**

* Dimensions are approximate due to various factors affecting production.
 Dimensions are subject to change without notice due to design or production modifications.



Macon Plastics, Inc.
 P. O. Box 95 • Macon, GA 31202
 478.743.6828 Fax 478.743.6819



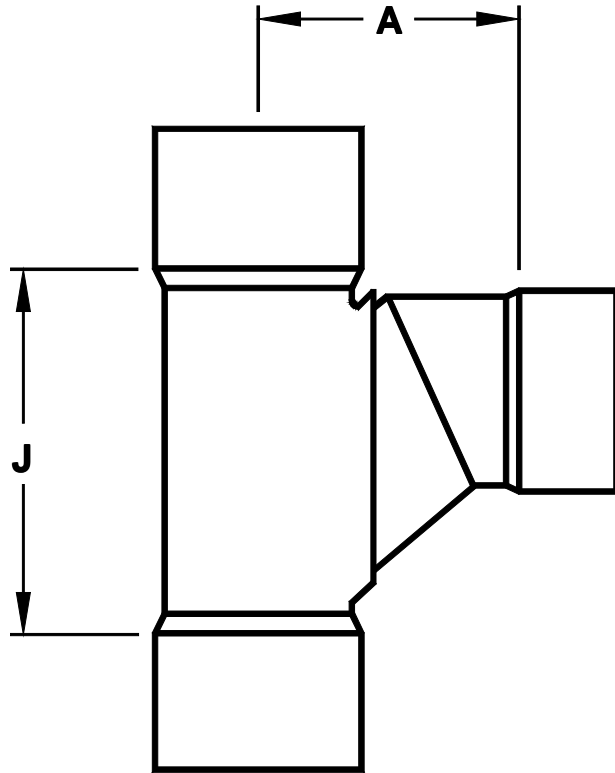
Nominal Size	A	J
*18x18	23.00	36.25
*20x4	16.75	13.50
*20x6	14.25	17.25
*20x8	16.50	20.50
*20x10	16.75	23.00
*20x12	19.50	25.50
*20x14	20.25	28.00
*20x16	23.00	31.00
*20x18	24.00	34.00
*20x20	27.00	37.00
*24x4	18.75	13.50
*24x6	16.25	17.25
*24x8	18.25	17.50
*24x10	18.75	20.50
*24x12	21.50	26.00
*24x14	22.50	28.50
*24x16	25.00	31.50

Description: Sanitary Tee
Material: SCH 40 DWV
Size: (per chart)
Configuration: Hub x Hub x Hub

* Dimensions are approximate due to various factors affecting production.
 Dimensions are subject to change without notice due to design or production modifications.



Macon Plastics, Inc.
P. O. Box 95 • Macon, GA 31202
478.743.6828 Fax 478.743.6819



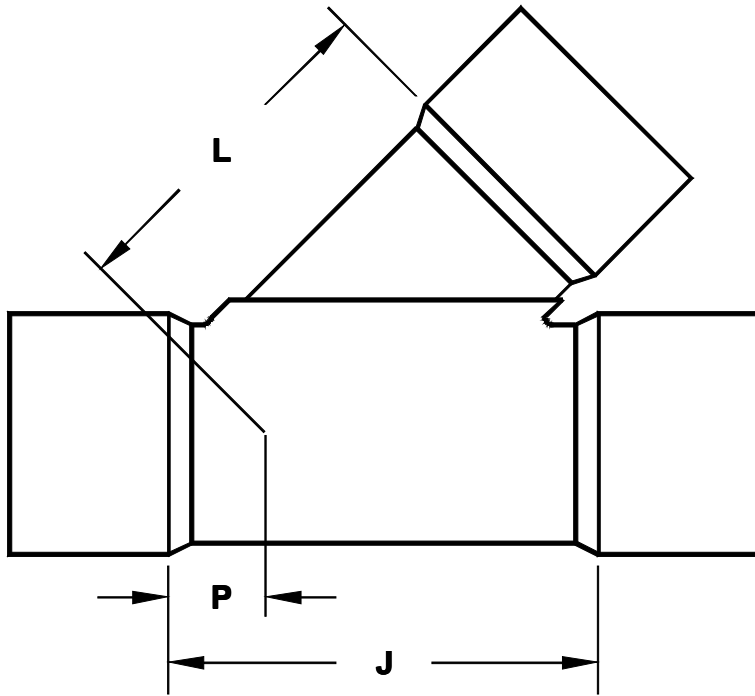
Nominal Size	A	J
*24x18	26.00	34.50
*24x20	31.00	37.50
*24x24	36.00	43.50

Description: **Sanitary Tee**
Material: **SCH 40 DWV**
Size: **(per chart)**
Configuration: **Hub x Hub x Hub**

* Dimensions are approximate due to various factors affecting production.
Dimensions are subject to change without notice due to design or production modifications.



Macon Plastics, Inc.
P. O. Box 95 • Macon, GA 31202
478.743.6828 Fax 478.743.6819



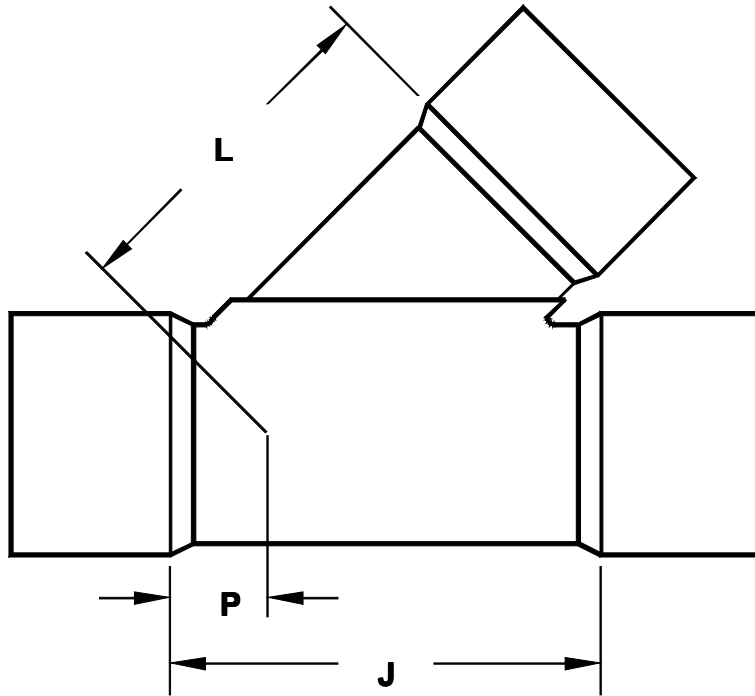
Nominal Size	P	L	J
6x4	0.19	7.44	6.94
6x6	1.37	8.38	8.38
*8x4	0.00	12.00	12.25
*8x6	1.50	13.88	14.25
*8x8	3.50	15.00	17.25
*10x4	1.25	13.00	11.25
*10x6	1.50	13.50	14.25
*10x8	4.50	15.00	19.25
*10x10	5.75	16.00	22.13
*12x4	0.00	13.00	10.25
*12x6	-0.13	16.50	15.25
*12x8	1.50	16.75	17.25
*12x10	3.25	17.25	20.25
*12x12	3.25	21.50	24.75

Description: Wye
Material: SCH 40 DWV
Size: (per chart)
Configuration: Hub x Hub x Hub

* Dimensions are approximate due to various factors affecting production.
Dimensions are subject to change without notice due to design or production modifications.



Macon Plastics, Inc.
 P. O. Box 95 • Macon, GA 31202
 478.743.6828 Fax 478.743.6819



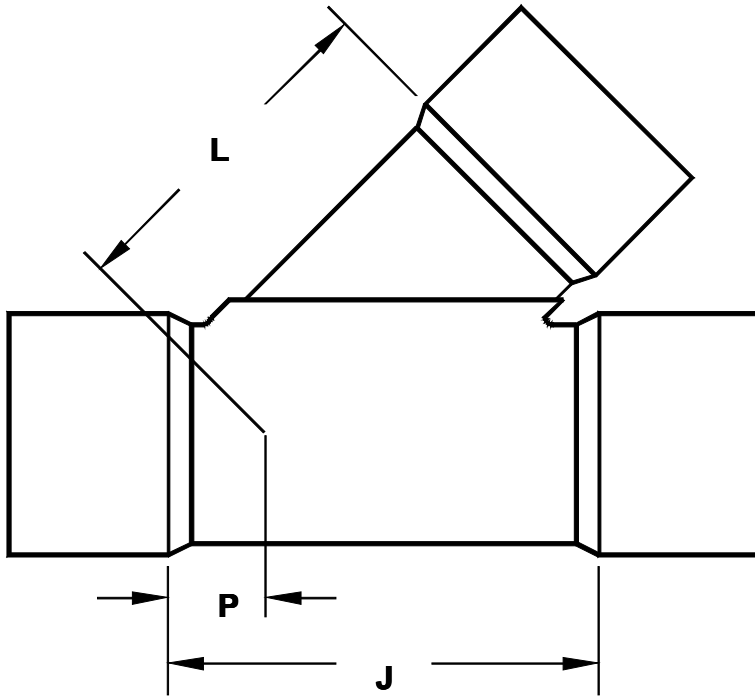
Nominal Size	P	L	J
*14x4	-0.50	12.50	10.50
*14x6	1.00	15.25	14.00
*14x8	1.00	19.50	16.50
*14x10	3.75	19.75	20.50
*14x12	6.50	21.50	24.75
*14x14	8.00	22.00	28.75
*16x4	-1.25	15.00	11.00
*16x6	1.00	17.50	16.00
*16x8	1.50	21.25	17.25
*16x10	5.00	22.25	22.00
*16x12	5.62	22.50	26.00
*16x14	6.00	23.00	28.75
*16x16	6.00	24.00	32.50

Description: Wye
Material: SCH 40 DWV
Size: (per chart)
Configuration: Hub x Hub x Hub

* Dimensions are approximate due to various factors affecting production.
 Dimensions are subject to change without notice due to design or production modifications.



Macon Plastics, Inc.
 P. O. Box 95 • Macon, GA 31202
 478.743.6828 Fax 478.743.6819



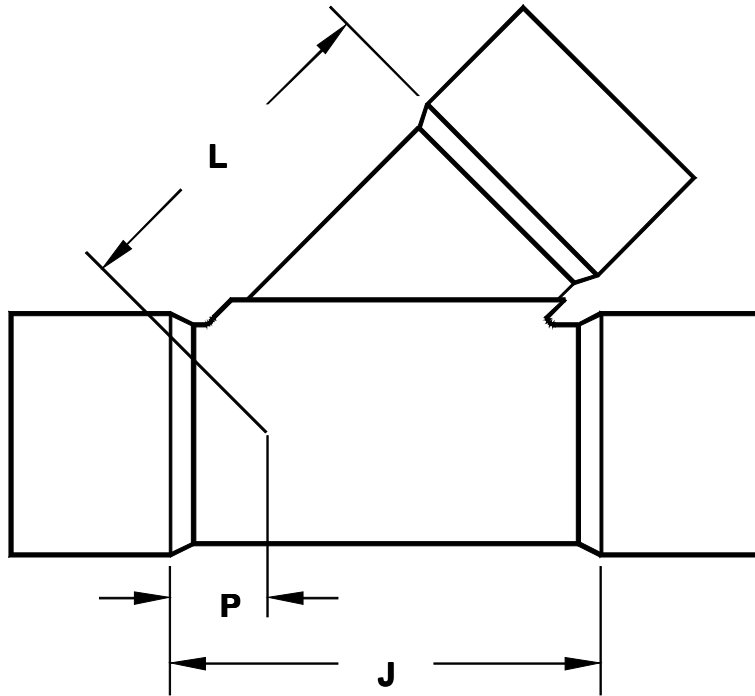
Nominal Size	P	L	J
*18x4	-1.75	15.75	13.50
*18x6	-1.00	18.25	14.25
*18x8	0.50	19.00	16.75
*18x10	3.50	23.50	24.00
*18x12	4.50	23.50	26.00
*18x14	6.00	23.00	29.25
*18x16	6.50	24.25	33.50
*18x18	7.00	29.00	36.25
*20x4	-2.00	18.80	13.50
*20x6	0.00	20.40	17.25
*20x8	1.50	22.90	20.50
*20x10	2.75	25.00	23.00
*20x12	4.25	25.50	25.50
*20x14	5.50	27.00	28.00
*20x16	7.00	28.50	31.00
*20x18	10.50	29.00	34.00
*20x20	12.00	30.50	37.00

Description: Wye
Material: SCH 40 DWV
Size: (per chart)
Configuration: Hub x Hub x Hub

* Dimensions are approximate due to various factors affecting production.
 Dimensions are subject to change without notice due to design or production modifications.



Macon Plastics, Inc.
 P. O. Box 95 • Macon, GA 31202
 478.743.6828 Fax 478.743.6819



Nominal Size	P	L	J
*24x4	-5.50	21.70	13.50
*24x6	-3.50	23.20	17.25
*24x8	-2.00	26.00	17.50
*24x10	-1.75	26.75	20.50
*24x12	0.75	28.70	26.00
*24x14	2.00	30.00	28.50
*24x16	3.50	31.40	31.50
*24x18	7.00	34.00	34.50
*24x20	14.30	37.30	37.50
*24x24	12.50	39.00	43.50

Description: Wye

Material: SCH 40 DWV

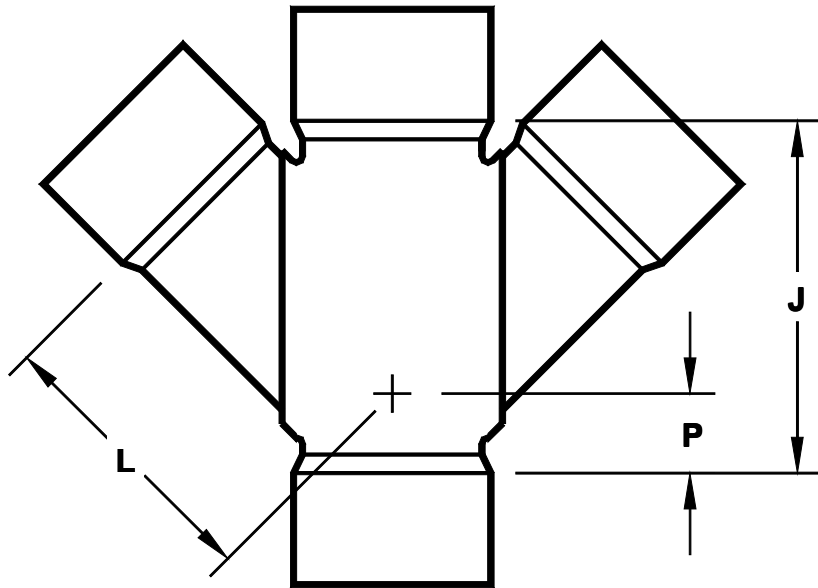
Size: (per chart)

Configuration: Hub x Hub x Hub

* Dimensions are approximate due to various factors affecting production.
 Dimensions are subject to change without notice due to design or production modifications.



Macon Plastics, Inc.
P. O. Box 95 • Macon, GA 31202
478.743.6828 Fax 478.743.6819



Nominal Size	P	L	J
6x4	0.18	7.44	6.94
*6x6	3.00	10.00	13.50
*8x4	0.00	12.00	12.25
*8x6	1.50	13.88	14.25
*8x8	3.50	15.00	17.25
*10x4	1.25	13.00	11.25
*10x6	1.50	13.50	14.25
*10x8	4.50	15.00	19.25
*10x10	5.75	16.00	22.13
*12x4	0.00	13.00	10.25
*12x6	-0.13	16.50	15.25
*12x8	1.50	16.75	17.25
*12x10	3.25	17.25	20.25
*12x12	3.25	21.50	24.75

Description: Double Wye

Material: SCH 40 DWV

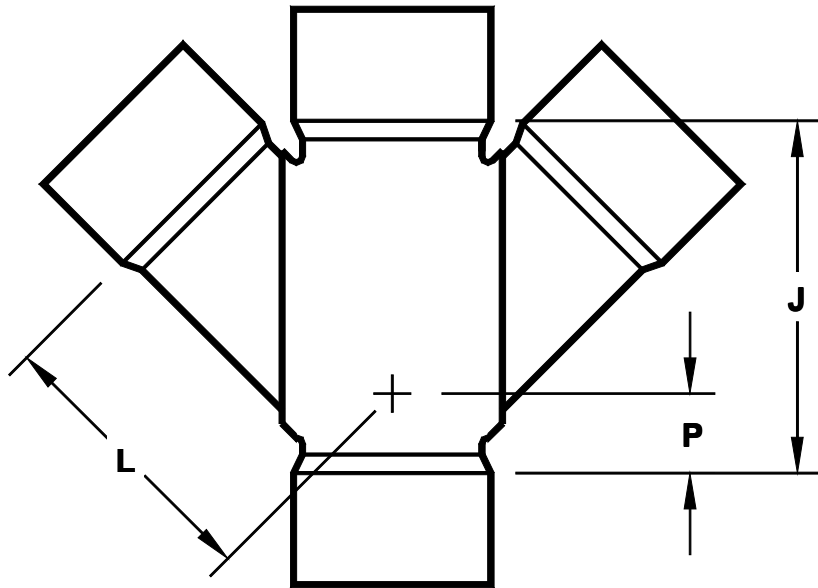
Size: (per chart)

Configuration: Hub x Hub x Hub x Hub

* Dimensions are approximate due to various factors affecting production.
Dimensions are subject to change without notice due to design or production modifications.



Macon Plastics, Inc.
P. O. Box 95 • Macon, GA 31202
478.743.6828 Fax 478.743.6819



Nominal Size	P	L	J
*14x4	-0.50	12.50	10.50
*14x6	1.00	15.25	14.00
*14x8	1.00	19.50	16.50
*14x10	3.75	19.75	20.50
*14x12	6.50	21.50	24.75
*14x14	8.00	22.00	28.75
*16x4	-1.25	15.00	11.00
*16x6	1.00	17.50	16.00
*16x8	1.50	21.25	17.25
*16x10	5.00	22.25	22.00
*16x12	5.62	22.50	26.00
*16x14	6.00	23.00	28.75
*16x16	6.00	24.00	32.50

Description: **Double Wye**

Material: **SCH 40 DWV**

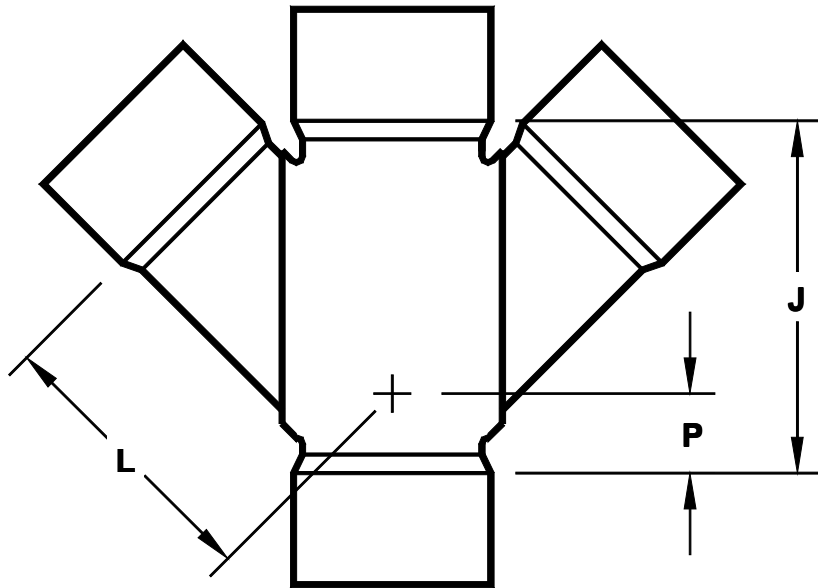
Size: **(per chart)**

Configuration: **Hub x Hub x Hub x Hub**

* Dimensions are approximate due to various factors affecting production.
Dimensions are subject to change without notice due to design or production modifications.



Macon Plastics, Inc.
 P. O. Box 95 • Macon, GA 31202
 478.743.6828 Fax 478.743.6819



Nominal Size	P	L	J
*18x4	-1.75	15.75	13.50
*18x6	-1.00	18.25	14.25
*18x8	0.50	19.00	16.75
*18x10	3.50	23.50	24.00
*18x12	4.50	23.50	26.00
*18x14	6.00	23.00	29.25
*18x16	6.50	24.25	33.50
*18x18	7.00	29.00	36.25
*20x4	-2.00	18.80	13.50
*20x6	0.00	20.40	17.25
*20x8	1.50	22.90	20.50
*20x10	2.75	25.00	23.00
*20x12	4.25	25.50	25.50
*20x14	5.50	27.00	28.00
*20x16	7.00	28.50	31.00
*20x18	10.50	29.00	34.00
*20x20	12.00	30.50	37.00

Description: Double Wye

Material: SCH 40 DWV

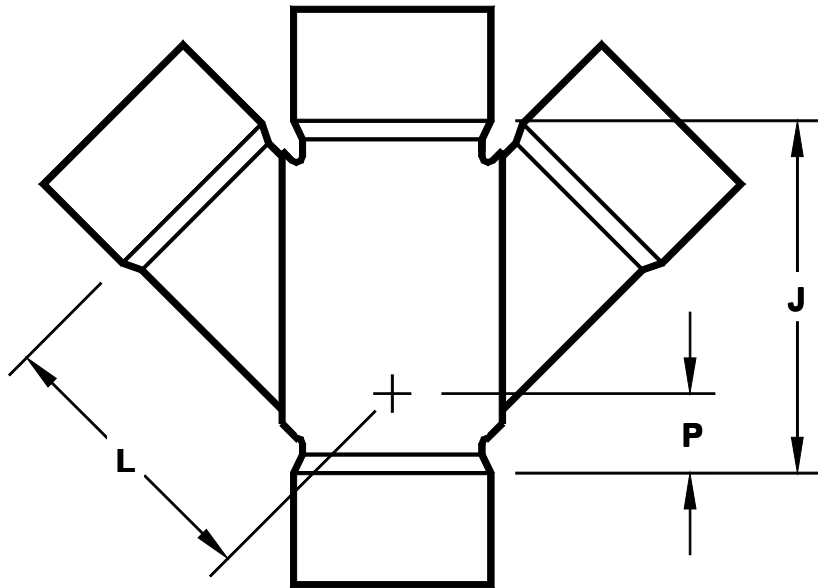
Size: (per chart)

Configuration: Hub x Hub x Hub x Hub

* Dimensions are approximate due to various factors affecting production.
 Dimensions are subject to change without notice due to design or production modifications.



Macon Plastics, Inc.
P. O. Box 95 • Macon, GA 31202
478.743.6828 Fax 478.743.6819



Nominal Size	P	L	J
*24x4	-5.50	21.70	13.50
*24x6	-3.50	23.20	17.25
*24x8	-2.00	26.00	17.50
*24x10	-1.75	26.75	20.50
*24x12	0.75	28.70	26.00
*24x14	2.00	30.00	28.50
*24x16	3.50	31.40	31.50
*24x18	7.00	34.00	34.50
*24x20	14.30	37.30	37.50
*24x24	12.50	39.00	43.50

Description: Double Wye

Material: SCH 40 DWV

Size: (per chart)

Configuration: Hub x Hub x Hub x Hub

* Dimensions are approximate due to various factors affecting production.
Dimensions are subject to change without notice due to design or production modifications.