



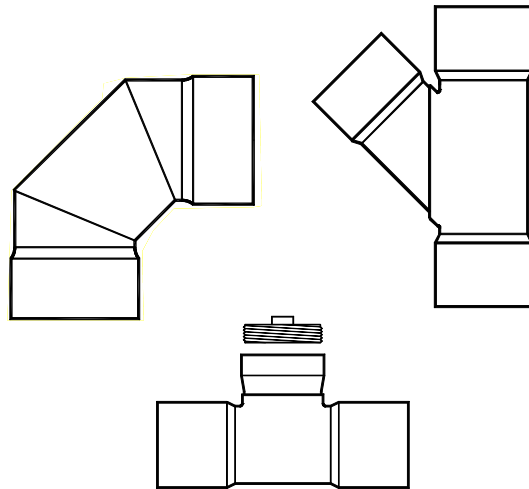
Macon Plastics, Inc.

P
R
I
C
E

L
I
S
T

Solvent Weld

3034
SDR 35 & SDR 26



Effective Date: 03/03/08
Catalog Number: 207S3034
Supercedes: 206S3034

Not sure if you have a current catalog?
Check www.maconplastics.com
to view our current catalogs online.

Multipliers
SDR 35 _____
SDR 26 _____

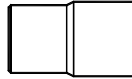
Table of Contents

Adapter Bushing.....	1
Adapter Coupling.....	1
Bushing, Flush.....	7
Bushing, Increaser Concentric.....	8
Bushing, Increaser Eccentric.....	8
Cap.....	2
Cleanout Adapter with Plug, Female.....	2
Cleanout Adapter with Plug, Male.....	2
Coupling, Increaser Concentric.....	9
Coupling, Increaser Eccentric.....	9
Coupling, Internal.....	2
Coupling, Repair.....	2
Coupling, Stop.....	3
Cross.....	3
Downspouts, Hub.....	2
Downspouts, Male.....	2
Elbows; 11¼°, 22½°, 30°, 45° and 90°.....	4,5
Elbows; Street 11¼°, 22½°, 30°, 45° and 90°.....	4,5
Flange, Blind.....	6
Flange, Van Stone.....	6
Flange, Van Stone Spigot.....	6
Inside Manhole Drop Cross.....	7
Male Adapter.....	7
Offset.....	6
Plug, Spigot.....	3
Plug, Threaded Countersunk.....	3
Plug, Threaded Raised Head.....	3
P-Trap.....	6
P-Trap with Cleanout.....	6
Tee.....	10
Tee, Cleanout 2-way.....	10
Tee, Cleanout with Plug.....	10
Tee, Sanitary.....	10
Tee-Wye (Combination).....	11
Tee-Wye, Double (Double Combination).....	11
Terms.....	13
Wye.....	12
Wye, Double.....	12

Note

Drawings in this catalog are representations and are not for engineering purposes. Contact the factory for submittals. All fittings in this catalog are for non-pressure service.

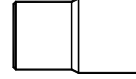
Adapter Bushing
Male x Hub



3034 SDR35 x IPS						
Size	Part Number	List Price	UPC 695783	Part Number	List Price	UPC 695783
4	97711	*	977115	X		
6	97712	*	977122			
8	97713	*	977139			
10	97714	*	977146			
12	97715	*	977153			
15x16	97716	*	977160			
18	97717	*	977177			

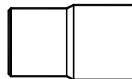
* For pricing see catalog 207SDWV.

Adapter Bushing
Male x Hub



3034 SDR35 x C900						
Size	Part Number	List Price	UPC 695783	Part Number	List Price	UPC 695783
4	97820	70.86	978204	X		
6	97821	104.16	978211			
8	97822	236.67	978228			
10	97823	281.07	978235			
12	97824	283.66	978242			
15x14	97825	504.01	978259			
15x16	97826	609.75	978266			
18	97827	1299.34	978273			

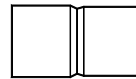
Adapter Bushing
Male x Hub



SCH 40 x 3034						
Size	Part Number	List Price	UPC 695783	Part Number	List Price	UPC 695783
4	87711	*	877118	X		
6	87712	*	877125			
8	87713	*	877132			
10	87714	*	877149			
12	87715	*	877156			
14x15	87716	*	877163			
16x15	87717	*	877170			
18	87718	*	877187			

* For pricing see catalog 207SDWV.

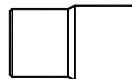
Adapter Coupling
Hub x Hub



3034 SDR35 x IPS						
Size	Part Number	List Price	UPC 695783	Part Number	List Price	UPC 695783
4	97810	*	978105	X		
6	97811	*	978112			
8	97812	*	978129			
10	97813	*	978136			
12	97814	*	978143			
15x14	97815	*	978150			
15x16	97816	*	978167			
18	97817	*	978174			

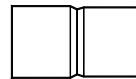
* For pricing see catalog 207SDWV.

Adapter Bushing
Male x Hub



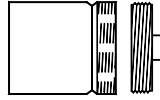
C900 DR18 x 3034						
Size	Part Number	List Price	UPC 695783	Part Number	List Price	UPC 695783
4	77720	70.86	777203	X		
6	77721	104.16	777210			
8	77722	236.67	777227			
10	77723	281.07	777234			
12	77724	283.66	777241			
14x15	77725	504.01	777258			
16x15	77726	609.75	777265			
18	77727	1299.34	777272			

Adapter Coupling
Hub x Hub

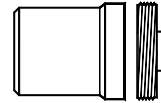


3034 SDR35 x C-900						
Size	Part Number	List Price	UPC 695783	Part Number	List Price	UPC 695783
4	97830	70.86	978303	X		
6	97831	104.16	978310			
8	97832	236.67	978327			
10	97833	281.07	978334			
12	97834	283.66	978341			
15x14	97835	504.01	978358			
15x16	97836	609.75	978365			
18	97837	1299.34	978372			

Female Cleanout Adapter With Plug
Hub x Fipt



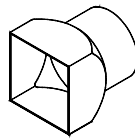
Male Cleanout Adapter With Plug
Male x Fipt



SDR 35						
Size	Part Number	List Price	UPC 695783	Part Number	List Price	UPC 695783
4	16640	10.22	166403	X	X	X
6	16641	49.37	166410			
8	16642	170.00	166427			
10	16643	681.85	166434			
12	16644	876.81	166441			
15	16645	1249.96	166458			
18	16646	1580.13	166465			
21	16647	P.O.A.	166472			
24	16648	P.O.A.	166489			

SDR 35						
Size	Part Number	List Price	UPC 695783	Part Number	List Price	UPC 695783
4	16650	8.87	166502	X	X	X
6	16651	50.47	166519			
8	16652	200.84	166526			
10	16653	694.66	166533			
12	16654	873.24	166540			
15	16655	1217.41	166557			
18	16656	1557.11	166564			
21	16657	P.O.A.	166571			
24	16658	P.O.A.	166588			

Downspout Adapter
DS x Hub



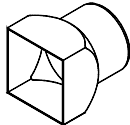
SDR 35						
Size	Part Number	List Price	UPC 695783	Part Number	List Price	UPC 695783
2x3x4	80258	6.12	802585	X	X	X
3x4x4	80259	9.66	802592			
4x4x4	80260	38.51	802608			
4x5x4	80261	40.32	802615			
4x6x6	80262	47.79	802622			
5x5x4	80263	40.32	802639			
5x5x6	80264	104.51	802646			
6x6x6	80265	102.14	802653			
8x8x8	80266	114.84	802660			

Cap
Hub x Cap



SDR 35			SDR 26			
Size	Part Number	List Price	UPC 695783	Part Number	List Price	UPC 695783
4	15050	2.78	150501	12350	P.O.A.	123505
6	15051	10.22	150518	12351	54.77	123512
8	15052	33.49	150525	12352	91.26	123529
10	15053	110.26	150532	12353	164.59	123536
12	15054	139.62	150549	12354	253.55	123543
15	15055	240.86	150556	12355	422.61	123550
18	15056	425.91	150563	12356	680.64	123567
21	15057	931.18	150570	12357	P.O.A.	123574
24	15058	1064.20	150587	12358	P.O.A.	123581

Downspout Adapter
DS x Male



SDR 35						
Size	Part Number	List Price	UPC 695783	Part Number	List Price	UPC 695783
4x4x4	80240	21.75	802400	X	X	X
4x5x4	80241	23.03	802417			
4x6x6	80242	22.86	802424			
5x5x4	80243	23.03	802431			
5x5x6	80244	78.87	802448			
6x6x6	80245	76.13	802455			
8x8x8	80246	87.98	802462			

Repair Coupling
Hub x Hub



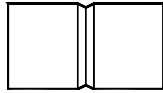
SDR 35						
Size	Part Number	List Price	UPC 695783	Part Number	List Price	UPC 695783
4	16288	3.19	162887	X	X	X
6	16289	11.67	162894			
8	16290	39.95	162900			
10	16291	102.87	162917			
12	16292	175.18	162924			
15	16293	306.79	162931			
18	16294	637.74	162948			
21	16295	1113.35	162955			
24	16296	1600.63	162962			

Internal Coupling
Male x Male



SDR 35						
Size	Part Number	List Price	UPC 695783	Part Number	List Price	UPC 695783
4	15041	36.24	150419	X	X	X
6	15042	80.40	150426			
8	15043	116.81	150433			
10	15044	241.70	150440			
12	15045	470.49	150457			

Stop Coupling
Hub x Hub



SDR 35				SDR 26		
Size	Part Number	List Price	UPC 695783	Part Number	List Price	UPC 695783
4	15061	3.19	150617	12361	P.O.A.	123611
6	15062	11.67	150624	12362	53.44	123628
8	15063	39.95	150631	12363	68.84	123635
10	15064	102.87	150648	12364	176.48	123642
12	15065	175.18	150655	12365	301.08	123659
15	15066	306.79	150662	12366	526.91	123666
18	15067	637.74	150679	12367	1125.48	123673
21	15068	1113.35	150686	12368	P.O.A.	123680
24	15069	1600.63	150693	12369	P.O.A.	123697

Spigot Plug
Male x Cap



SDR 35				SDR 26		
Size	Part Number	List Price	UPC 695783	Part Number	List Price	UPC 695783
4	16998	6.45	169985	13948	20.57	139483
6	16999	9.89	169992	13949	41.46	139490
8	17000	35.06	170004	13950	73.23	139506
10	17001	116.81	170011	13951	140.75	139513
12	17002	139.61	170028	13952	167.80	139520
15	17003	274.71	170035	13953	308.68	139537
18	17004	386.81	170042	13954	484.31	139544
21	17005	765.10	170059	13955	P.O.A.	139551
24	17006	1150.48	170066	13956	P.O.A.	139568

Threaded Plug,
Countersunk
Mipt



Size	Part Number	List Price	UPC 695783	Part Number	List Price	UPC 695783
4	56740	*	567408	X		
6	56741	*	567415			
8	56742	*	567422			
10	56743	*	567439			
12	56744	*	567446			
15	56745	*	567453			
18	56746	*	567460			

*For pricing see catalog 207SDWV.

Threaded Plug,
Raised Head
Mipt

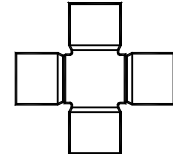


Size	Part Number	List Price	UPC 695783	Part Number	List Price	UPC 695783
4	32795	*	327958	X		
6	32796	*	327965			
8	32797	*	327972			

*For pricing see catalog 207SDWV.

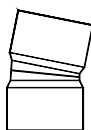
Cross

Hub x Hub x Hub x Hub



SDR 35				SDR 26		
Size	Part Number	List Price	UPC 695783	Part Number	List Price	UPC 695783
4x4	15072	18.69	150723	12372	P.O.A.	123727
6x4	15073	66.45	150730	12373	104.66	123734
6x6	15074	80.37	150747	12374	132.91	123741
8x4	15075	121.37	150754	12375	171.56	123758
8x6	15076	128.04	150761	12376	196.13	123765
8x8	15077	156.08	150778	12377	290.84	123772
10x4	15078	241.27	150785	12378	372.69	123789
10x6	15079	275.68	150792	12379	391.40	123796
10x8	15080	382.81	150808	12380	530.13	123802
10x10	15081	436.85	150815	12381	643.44	123819
12x4	15082	287.97	150822	12382	416.75	123826
12x6	15083	342.76	150839	12383	483.54	123833
12x8	15084	437.87	150846	12384	560.18	123840
12x10	15085	559.73	150853	12385	657.24	123857
12x12	15086	622.40	150860	12386	769.70	123864
15x4	15087	607.71	150877	12387	688.93	123871
15x6	15088	705.86	150884	12388	795.43	123888
15x8	15089	738.90	150891	12389	840.95	123895
15x10	15090	758.99	150907	12390	877.62	123901
15x12	15091	811.62	150914	12391	937.27	123918
15x15	15092	974.76	150921	12392	1142.33	123925
18x4	15093	1224.53	150938	12393	1527.99	123932
18x6	15094	1366.44	150945	12394	1744.07	123949
18x8	15095	1429.32	150952	12395	1843.14	123956
18x10	15096	1725.62	150969	12396	2214.47	123963
18x12	15097	1823.89	150976	12397	2426.03	123970
18x15	15098	2108.36	150983	12398	2762.86	123987
18x18	15099	2823.25	150990	12399	3749.97	123994
21x4	15100	1446.41	151003	12400	P.O.A.	124007
21x6	15101	1578.24	151010	12401	P.O.A.	124014
21x8	15102	1807.18	151027	12402	P.O.A.	124021
21x10	15103	1987.53	151034	12403	P.O.A.	124038
21x12	15104	2185.23	151041	12404	P.O.A.	124045
21x15	15105	2403.76	151058	12405	P.O.A.	124052
21x18	15106	2643.09	151065	12406	P.O.A.	124069
21x21	15107	3305.63	151072	12407	P.O.A.	124076
24x4	15108	2237.28	151089	12408	P.O.A.	124083
24x6	15109	2500.88	151096	12409	P.O.A.	124090
24x8	15110	2559.85	151102	12410	P.O.A.	124106
24x10	15111	3073.20	151119	12411	P.O.A.	124113
24x12	15112	3687.19	151126	12412	P.O.A.	124120
24x15	15113	4425.98	151133	12413	P.O.A.	124137
24x18	15114	4741.52	151140	12414	P.O.A.	124144
24x21	15115	5692.28	151157	12415	P.O.A.	124151
24x24	15116	7113.80	151164	12416	P.O.A.	124168

11 1/4° Elbow
Hub x Hub



11 1/4° Elbow
Male x Hub



Size	SDR 35			SDR 26		
	Part Number	List Price	UPC 695783	Part Number	List Price	UPC 695783
4	15138	P.O.A.	151386	12438	P.O.A.	124380
6	15139	136.63	151393	12439	168.37	124397
8	15140	180.72	151409	12440	208.08	124403
10	15141	189.67	151416	12441	331.41	124410
12	15142	275.92	151423	12442	474.41	124427
15	15143	606.74	151430	12443	1079.56	124434
18	15144	746.01	151447	12444	1275.27	124441
21	15145	1352.60	151454	12445	P.O.A.	124458
24	15146	1927.53	151461	12446	P.O.A.	124465

Size	SDR 35			SDR 26		
	Part Number	List Price	UPC 695783	Part Number	List Price	UPC 695783
4	15149	P.O.A.	151492	12449	P.O.A.	124496
6	15150	136.63	151508	12450	168.37	124502
8	15151	180.72	151515	12451	208.08	124519
10	15152	189.67	151522	12452	331.41	124526
12	15153	275.92	151539	12453	474.41	124533
15	15154	606.74	151546	12454	1079.56	124540
18	15155	746.01	151553	12455	1275.27	124557
21	15156	1352.60	151560	12456	P.O.A.	124564
24	15157	1927.53	151577	12457	P.O.A.	124571

15° Elbow
Hub x Hub



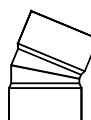
15° Elbow
Male x Hub



Size	SDR 35			SDR 26		
	Part Number	List Price	UPC 695783	Part Number	List Price	UPC 695783
4	16300	P.O.A.	163006	13600	P.O.A.	136000
6	16301	136.63	163013	13601	168.37	136017
8	16302	180.72	163020	13602	208.08	136024
10	16303	189.67	163037	13603	331.41	136031
12	16304	275.92	163044	13604	474.41	136048
15	16305	606.74	163051	13605	1079.56	136055
18	16306	746.01	163068	13606	1275.27	136062
21	16307	1352.60	163075	13607	P.O.A.	136079
24	16308	1927.53	163082	13608	P.O.A.	136086

Size	SDR 35			SDR 26		
	Part Number	List Price	UPC 695783	Part Number	List Price	UPC 695783
4	16311	P.O.A.	163112	13611	P.O.A.	136116
6	16312	136.63	163129	13612	168.37	136123
8	16313	180.72	163136	13613	208.08	136130
10	16314	189.67	163143	13614	331.41	136147
12	16315	275.92	163150	13615	474.41	136154
15	16316	606.74	163167	13616	1079.56	136161
18	16317	746.01	163174	13617	1275.27	136178
21	16318	1352.60	163181	13618	P.O.A.	136185
24	16319	1927.53	163198	13619	P.O.A.	136192

22 1/2° Elbow
Hub x Hub



22 1/2° Elbow
Male x Hub

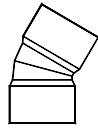


Size	SDR 35			SDR 26		
	Part Number	List Price	UPC 695783	Part Number	List Price	UPC 695783
4	15160	5.30	151607	12460	P.O.A.	124601
6	15161	23.22	151614	12461	73.40	124618
8	15162	60.00	151621	12462	130.48	124625
10	15163	186.08	151638	12463	255.62	124632
12	15164	270.72	151645	12464	384.49	124649
15	15165	595.31	151652	12465	817.96	124656
18	15166	731.98	151669	12466	1042.89	124663
21	15167	1352.83	151676	12467	P.O.A.	124670
24	15168	1927.83	151683	12468	P.O.A.	124687

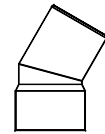
Size	SDR 35			SDR 26		
	Part Number	List Price	UPC 695783	Part Number	List Price	UPC 695783
4	15171	5.83	151713	12471	P.O.A.	124717
6	15172	24.17	151720	12472	73.40	124724
8	15173	56.94	151737	12473	130.48	124731
10	15174	159.97	151744	12474	255.62	124748
12	15175	236.16	151751	12475	384.49	124755
15	15176	508.58	151768	12476	817.96	124762
18	15177	653.55	151775	12477	1042.89	124779
21	15178	1207.88	151782	12478	P.O.A.	124786
24	15179	1721.27	151799	12479	P.O.A.	124793

Elbows can be made to any angle. Contact factory for pricing.

30° Elbow
Hub x Hub



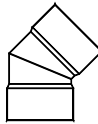
30° Elbow
Male x Hub



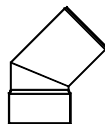
Size	SDR 35			SDR 26		
	Part Number	List Price	UPC 695783	Part Number	List Price	UPC 695783
4	15182	P.O.A.	151829	12482	P.O.A.	124823
6	15183	136.63	151836	12483	168.37	124830
8	15184	180.72	151843	12484	208.08	124847
10	15185	198.85	151850	12485	331.41	124854
12	15186	284.63	151867	12486	474.41	124861
15	15187	647.76	151874	12487	1079.56	124878
18	15188	765.16	151881	12488	1275.27	124885
21	15189	1352.60	151898	12489	P.O.A.	124892
24	15190	1927.53	151904	12490	P.O.A.	124908

Size	SDR 35			SDR 26		
	Part Number	List Price	UPC 695783	Part Number	List Price	UPC 695783
4	15193	P.O.A.	151935	12493	P.O.A.	124939
6	15194	136.63	151942	12494	168.37	124946
8	15195	180.72	151959	12495	208.08	124953
10	15196	198.85	151966	12496	331.41	124960
12	15197	284.63	151973	12497	474.41	124977
15	15198	647.76	151980	12498	1079.56	124984
18	15199	765.16	151997	12499	1275.27	124991
21	15200	1352.60	152000	12500	P.O.A.	125004
24	15201	1927.53	152017	12501	P.O.A.	125011

45° Elbow
Hub x Hub



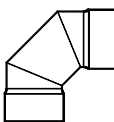
45° Elbow
Male x Hub



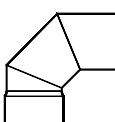
Size	SDR 35			SDR 26		
	Part Number	List Price	UPC 695783	Part Number	List Price	UPC 695783
4	15204	4.83	152048	12504	P.O.A.	125042
6	15205	19.03	152055	12505	103.51	125059
8	15206	51.84	152062	12506	169.52	125066
10	15207	182.02	152079	12507	250.06	125073
12	15208	282.69	152086	12508	392.22	125080
15	15209	631.78	152093	12509	912.15	125097
18	15210	731.98	152109	12510	1042.89	125103
21	15211	1352.83	152116	12511	P.O.A.	125110
24	15212	1927.83	152123	12512	P.O.A.	125127

Size	SDR 35			SDR 26		
	Part Number	List Price	UPC 695783	Part Number	List Price	UPC 695783
4	15215	6.53	152154	12515	P.O.A.	125158
6	15216	24.30	152161	12516	103.51	125165
8	15217	63.50	152178	12517	169.52	125172
10	15218	175.39	152185	12518	250.06	125189
12	15219	279.96	152192	12519	392.22	125196
15	15220	496.95	152208	12520	912.15	125202
18	15221	731.98	152215	12521	1042.89	125219
21	15222	1352.83	152222	12522	P.O.A.	125226
24	15223	1927.83	152239	12523	P.O.A.	125233

90° Elbow
Hub x Hub



90° Elbow
Male x Hub



Size	SDR 35			SDR 26		
	Part Number	List Price	UPC 695783	Part Number	List Price	UPC 695783
4	15226	6.64	152260	12526	P.O.A.	125264
6	15227	31.91	152277	12527	154.16	125271
8	15228	73.23	152284	12528	263.19	125288
10	15229	261.53	152291	12529	352.52	125295
12	15230	367.36	152307	12530	525.44	125301
15	15231	743.12	152314	12531	963.70	125318
18	15232	1057.07	152321	12532	1572.87	125325
21	15233	1699.17	152338	12533	P.O.A.	125332
24	15234	2353.22	152345	12534	P.O.A.	125349

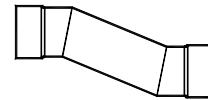
Size	SDR 35			SDR 26		
	Part Number	List Price	UPC 695783	Part Number	List Price	UPC 695783
4	15237	7.77	152376	12537	P.O.A.	125370
6	15238	36.06	152383	12538	154.16	125387
8	15239	90.09	152390	12539	263.19	125394
10	15240	252.17	152406	12540	352.52	125400
12	15241	367.17	152413	12541	525.44	125417
15	15242	689.36	152420	12542	963.70	125424
18	15243	1103.89	152437	12543	1572.87	125431
21	15244	1699.17	152444	12544	P.O.A.	125448
24	15245	2353.22	152451	12545	P.O.A.	125455

Elbows can be made to any angle. Contact factory for pricing.

Blind Flange



Offset
Hub x Hub



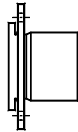
SDR 35						
Size	Part Number	List Price	UPC 695783	Part Number	List Price	UPC 695783
6	33001	*	330019	X		
8	33002	*	330026			
10	33003	*	330033			
12	33004	*	330040			
14	33005	*	330057			
16	33006	*	330064			
18	33007	*	330071			
20	33008	*	330088			
24	33009	*	330095			

SDR 35						
Size	Part Number	List Price	UPC 695783	Part Number	List Price	UPC 695783
6	16270	293.64	162702	X		
8	16271	428.70	162719			
10	16272	664.65	162726			
12	16273	1002.88	162733			
15	16274	1109.20	162740			
18	16275	1414.66	162757			

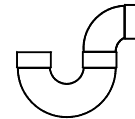
Please specify advance and offset when ordering. Check with factory on any offsets over 36" advance length.

* For pricing see catalog 207SDWV.

Van Stone
Flange
Flange x Hub



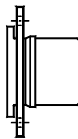
P-Trap
Hub x Hub



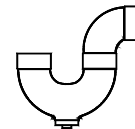
SDR 35						
Size	Part Number	List Price	UPC 695783	Part Number	List Price	UPC 695783
4	15262	145.03	152628	X		
6	15263	197.74	152635			
8	15264	331.80	152642			
10	15265	660.78	152659			
12	15266	704.17	152666			
14x15	15267	2347.71	152673			
16x15	15268	3091.88	152680			
18	15269	3227.96	152697			
20x21	15270	4052.89	152703			
24	15271	5767.86	152710			

SDR 35						
Size	Part Number	List Price	UPC 695783	Part Number	List Price	UPC 695783
6	16330	225.40	163303	X		
8	16331	565.00	163310			
10	16332	811.80	163327			
12	16333	1582.70	163334			

Van Stone
Spigot Flange
Flange x Spigot



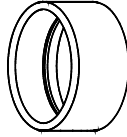
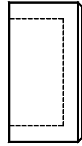
P-Trap with
Cleanout
Hub x Hub



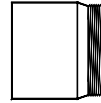
SDR 35						
Size	Part Number	List Price	UPC 695783	Part Number	List Price	UPC 695783
4	15252	152.63	152529	X		
6	15253	208.09	152536			
8	15254	349.17	152543			
10	15255	507.58	152550			
12	15256	857.13	152567			
14x15	15257	882.41	152574			
16x15	15258	1199.58	152581			
18	15259	1252.61	152598			
20x21	15260	1572.74	152604			
24	15261	2238.36	152611			

SDR 35						
Size	Part Number	List Price	UPC 695783	Part Number	List Price	UPC 695783
6	16338	309.75	163389	X		
8	16339	621.41	163396			

Flush Bushing
Male x Hub



Male Adapter
Hub x Mipt



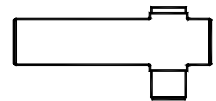
SDR 35

Size	Part Number	List Price	UPC 695783	Part Number	List Price	UPC 695783
4x6	16410	24.18	164102			
4x8	16411	219.29	164119			
6x8	16412	171.03	164126			
4x10	16413	513.36	164133			
6x10	16414	464.07	164140			
8x10	16415	294.07	164157			
4x12	16416	1054.90	164164			
6x12	16417	1006.18	164171			
8x12	16418	835.14	164188			
10x12	16419	541.06	164195			
4x15	16420	2494.50	164201			
6x15	16421	2364.75	164218			
8x15	16422	2196.62	164225			
10x15	16423	1886.89	164232			
12x15	16424	1289.15	164249			
4x18	16425	3077.11	164256			
6x18	16426	2915.14	164263			
8x18	16427	2628.66	164270			
10x18	16428	2287.79	164287			
12x18	16429	1912.40	164294			
15x18	16430	1607.76	164300			
4x21	16431	4115.15	164317			
6x21	16432	3977.41	164324			
8x21	16433	3569.37	164331			
10x21	16434	3332.77	164348			
12x21	16435	2855.05	164355			
15x21	16436	2372.38	164362			
18x21	16437	1924.15	164379			
4x24	16438	4660.85	164386			
6x24	16439	4615.09	164393			
8x24	16440	4426.64	164409			
10x24	16441	4275.01	164416			
12x24	16442	4114.84	164423			
15x24	16443	3584.96	164430			
18x24	16444	3081.10	164447			
21x24	16445	2594.06	164454			

SDR 35

Size	Part Number	List Price	UPC 695783	Part Number	List Price	UPC 695783
4	99150	19.03	991500			
6	99151	89.17	991517			
8	99152	217.27	991524			
10	99153	350.44	991531			
12	99154	528.76	991548			
15	99155	679.70	991555			
18	99156	861.13	991562			

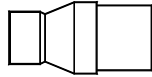
Inside Manhole
Drop Cross
with Cap & Chain



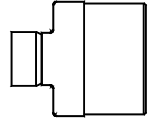
3034 SDR 35 x SCH 40

Size	Part Number	List Price	UPC 695783	Part Number	List Price	UPC 695783
4x3	16660	198.75	166601			
6x4	16662	372.05	166625			
6x6	16663	384.32	166632			
8x4	16664	585.71	166649			
8x6	16665	616.20	166656			
8x8	16666	730.91	166663			
10x4	16667	1537.90	166670			
10x6	16668	1659.74	166687			
10x8	16669	1777.96	166694			
10x10	16670	2306.79	166700			
12x4	16671	1642.96	166717			
12x6	16672	1894.13	166724			
12x8	16673	2026.67	166731			
12x10	16674	2238.91	166748			
12x12	16675	2660.80	166755			
15x4	16676	1733.37	166762			
15x6	16677	2025.56	166779			
15x8	16678	2185.08	166786			
15x10	16679	2404.70	166793			
15x12	16680	2770.47	166809			
15x15	16681	2987.47	166816			

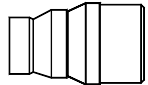
Increaser Bushing
Concentric
Hub x Male



Style A

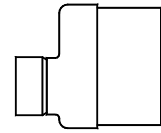


† Style B



‡ Style C

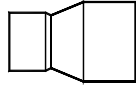
Increaser Bushing
Eccentric
Hub x Male



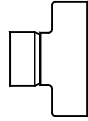
Size	SDR 35			SDR 26		
	Part Number	List Price	UPC 695783	Part Number	List Price	UPC 695783
4x6	15331	15.18	153311	12631	64.89	126315
4x8	15332	50.03	153328	12632	88.37	126322
6x8	15333	50.99	153335	12633	90.71	126339
4x10	†15334	109.65	153342	12634	152.39	126346
6x10	15335	158.30	153359	12635	220.01	126353
8x10	15336	174.77	153366	12636	242.91	126360
4x12	†15337	185.08	153373	12637	257.26	126377
6x12	‡15338	195.58	153380	12638	271.80	126384
8x12	15339	212.19	153397	12639	294.88	126391
10x12	15340	266.52	153403	12640	370.39	126407
4x15	†15341	254.09	153410	12641	353.13	126414
6x15	‡15342	281.84	153427	12642	391.70	126421
8x15	‡15343	378.33	153434	12643	525.80	126438
10x15	15344	422.25	153441	12644	586.91	126445
12x15	15345	447.45	153458	12645	622.50	126452
4x18	†15346	423.29	153465	12646	588.27	126469
6x18	†15347	446.72	153472	12647	620.92	126476
8x18	†15348	464.62	153489	12648	645.76	126483
10x18	†15349	482.07	153496	12649	670.06	126490
12x18	‡15350	493.11	153502	12650	685.40	126506
15x18	15351	496.24	153519	12651	689.72	126513
4x21	†15352	546.12	153526	12652	P.O.A.	126520
6x21	†15353	559.60	153533	12653	P.O.A.	126537
8x21	†15354	572.04	153540	12654	P.O.A.	126544
10x21	†15355	595.38	153557	12655	P.O.A.	126551
12x21	†15356	617.07	153564	12656	P.O.A.	126568
15x21	‡15357	658.08	153571	12657	P.O.A.	126575
18x21	15358	674.69	153588	12658	P.O.A.	126582
4x24	†15359	1283.19	153595	12659	P.O.A.	126599
6x24	†15360	1298.44	153601	12660	P.O.A.	126605
8x24	†15361	1314.73	153618	12661	P.O.A.	126612
10x24	†15362	1345.45	153625	12662	P.O.A.	126629
12x24	†15363	1362.98	153632	12663	P.O.A.	126636
15x24	†15364	1401.87	153649	12664	P.O.A.	126643
18x24	‡15365	1463.32	153656	12665	P.O.A.	126650
21x24	15366	1720.55	153663	12666	P.O.A.	126667

Size	SDR 35			SDR 26		
	Part Number	List Price	UPC 695783	Part Number	List Price	UPC 695783
4x6	15441	P.O.A.	154417	12741	P.O.A.	127411
4x8	15442	82.94	154424	12742	202.55	127428
6x8	15443	103.91	154431	12743	231.94	127435
4x10	15444	182.78	154448	12744	298.03	127442
6x10	15445	197.47	154455	12745	257.51	127459
8x10	15446	206.29	154462	12746	262.73	127466
4x12	15447	201.83	154479	12747	292.09	127473
6x12	15448	220.40	154486	12748	508.63	127480
8x12	15449	222.19	154493	12749	396.82	127497
10x12	15450	279.04	154509	12750	400.68	127503
4x15	15451	265.62	154516	12751	546.24	127510
6x15	15452	294.16	154523	12752	655.26	127527
8x15	15453	395.42	154530	12753	544.97	127534
10x15	15454	441.72	154547	12754	625.84	127541
12x15	15455	467.91	154554	12755	655.91	127558
4x18	15456	442.77	154561	12756	590.15	127565
6x18	15457	466.99	154578	12757	486.44	127572
8x18	15458	486.07	154585	12758	608.58	127589
10x18	15459	504.78	154592	12759	629.14	127596
12x18	15460	515.10	154608	12760	696.07	127602
15x18	15461	519.09	154615	12761	689.25	127619
4x21	15462	570.95	154622	12762	P.O.A.	127626
6x21	15463	585.50	154639	12763	P.O.A.	127633
8x21	15464	598.56	154646	12764	P.O.A.	127640
10x21	15465	622.17	154653	12765	P.O.A.	127657
12x21	15466	645.10	154660	12766	P.O.A.	127664
15x21	15467	688.16	154677	12767	P.O.A.	127671
18x21	15468	775.34	154684	12768	P.O.A.	127688
4x24	15469	1280.80	154691	12769	P.O.A.	127695
6x24	15470	1296.04	154707	12770	P.O.A.	127701
8x24	15471	1312.27	154714	12771	P.O.A.	127718
10x24	15472	1342.92	154721	12772	P.O.A.	127725
12x24	15473	1360.45	154738	12773	P.O.A.	127732
15x24	15474	1399.27	154745	12774	P.O.A.	127749
18x24	15475	1460.58	154752	12775	P.O.A.	127756
21x24	15476	1717.30	154769	12776	P.O.A.	127763

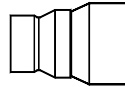
Increaser Coupling
Concentric
Hub x Hub



Style A

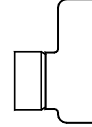


† Style B



‡ Style C

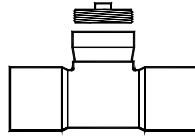
Increaser Coupling
Eccentric
Hub x Hub



Size	SDR 35			SDR 26		
	Part Number	List Price	UPC 695783	Part Number	List Price	UPC 695783
4x6	15276	15.50	152765	12576	65.64	125769
4x8	15277	63.87	152772	12577	88.75	125776
6x8	15278	65.62	152789	12578	91.21	125783
4x10	†15279	131.62	152796	12579	182.93	125790
6x10	15280	211.67	152802	12580	294.17	125806
8x10	15281	188.45	152819	12581	261.91	125813
4x12	†15282	222.87	152826	12582	309.79	125820
6x12	‡15283	234.77	152833	12583	326.28	125837
8x12	15284	306.30	152840	12584	425.71	125844
10x12	15285	252.32	152857	12585	350.70	125851
4x15	†15286	270.37	152864	12586	341.60	125868
6x15	†15287	339.49	152871	12587	471.83	125875
8x15	‡15288	448.72	152888	12588	623.68	125882
10x15	‡15289	494.36	152895	12589	687.10	125899
12x15	15290	493.11	152901	12590	685.40	125905
4x18	†15291	423.29	152918	12591	588.27	125912
6x18	†15292	446.72	152925	12592	620.92	125929
8x18	†15293	464.62	152932	12593	645.76	125936
10x18	†15294	482.07	152949	12594	670.06	125943
12x18	‡15295	533.20	152956	12595	741.07	125950
15x18	15296	514.19	152963	12596	715.89	125967
4x21	†15297	552.76	152970	12597	P.O.A.	125974
6x21	†15298	562.28	152987	12598	P.O.A.	125981
8x21	†15299	576.66	152994	12599	P.O.A.	125998
10x21	†15300	595.38	153007	12600	P.O.A.	126001
12x21	†15301	617.03	153014	12601	P.O.A.	126018
15x21	‡15302	664.18	153021	12602	P.O.A.	126025
18x21	15303	735.92	153038	12603	P.O.A.	126032
4x24	†15304	1300.57	153045	12604	P.O.A.	126049
6x24	†15305	1310.03	153052	12605	P.O.A.	126056
8x24	†15306	1324.40	153069	12606	P.O.A.	126063
10x24	†15307	1343.09	153076	12607	P.O.A.	126070
12x24	†15308	1364.84	153083	12608	P.O.A.	126087
15x24	†15309	1412.04	153090	12609	P.O.A.	126094
18x24	‡15310	1483.76	153106	12610	P.O.A.	126100
21x24	15311	1801.29	153113	12611	P.O.A.	126117

Size	SDR 35			SDR 26		
	Part Number	List Price	UPC 695783	Part Number	List Price	UPC 695783
4x6	15386	81.39	153861	12686	P.O.A.	12686
4x8	15387	117.84	153878	12687	202.55	12687
6x8	15388	143.12	153885	12688	231.94	12688
4x10	15389	206.45	153892	12689	298.03	12689
6x10	15390	220.77	153908	12690	257.51	12690
8x10	15391	196.97	153915	12691	262.73	12691
4x12	15392	232.94	153922	12692	292.09	12692
6x12	15393	245.25	153939	12693	508.63	12693
8x12	15394	319.41	153946	12694	396.82	12694
10x12	15395	263.91	153953	12695	400.68	12695
4x15	15396	346.40	153960	12696	546.24	12696
6x15	15397	355.58	153977	12697	655.26	12697
8x15	15398	469.33	153984	12698	544.97	12698
10x15	15399	490.39	153991	12699	625.84	12699
12x15	15400	515.95	154004	12700	655.91	12700
4x18	15401	443.20	154011	12701	590.15	12701
6x18	15402	467.19	154028	12702	486.44	12702
8x18	15403	485.94	154035	12703	608.58	12703
10x18	15404	503.52	154042	12704	629.14	12704
12x18	15405	557.92	154059	12705	696.07	12705
15x18	15406	538.56	154066	12706	689.25	12706
4x21	15407	577.56	154073	12707	P.O.A.	12707
6x21	15408	587.94	154080	12708	P.O.A.	12708
8x21	15409	603.21	154097	12709	P.O.A.	12709
10x21	15410	622.41	154103	12710	P.O.A.	12710
12x21	15411	645.70	154110	12711	P.O.A.	12711
15x21	15412	694.65	154127	12712	P.O.A.	12712
18x21	15413	769.72	154134	12713	P.O.A.	12713
4x24	15414	1361.05	154141	12714	P.O.A.	12714
6x24	15415	1370.98	154158	12715	P.O.A.	12715
8x24	15416	1386.03	154165	12716	P.O.A.	12716
10x24	15417	1405.63	154172	12717	P.O.A.	12717
12x24	15418	1428.32	154189	12718	P.O.A.	12718
15x24	15419	1477.67	154196	12719	P.O.A.	12719
18x24	15420	1552.78	154202	12720	P.O.A.	12720
21x24	15421	1885.03	154219	12721	P.O.A.	12721

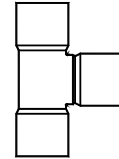
Cleanout Tee
With Plug
Hub x Hub x Flpt



SDR 35						
Size	Part Number	List Price	UPC 695783	Part Number	List Price	UPC 695783
4x4	14960	20.75	149604	X		
6x4	14961	50.00	149611			
6x6	14962	110.70	149628			
8x4	14963	96.07	149635			
8x6	14964	175.79	149642			
8x8	14965	371.71	149659			
10x4	14966	292.99	149666			
10x6	14967	395.24	149673			
10x8	14968	492.46	149680			
10x10	14969	P.O.A.	149697			
12x4	14970	404.11	149703			
12x6	14971	494.98	149710			
12x8	14972	747.93	149727			
12x10	14973	P.O.A.	149734			
12x12	14974	P.O.A.	149741			
15x4	14975	623.20	149758			
15x6	14976	737.92	149765			
15x8	14977	967.98	149772			
15x10	14978	P.O.A.	149789			
15x12	14979	P.O.A.	149796			
15x15	14980	P.O.A.	149802			

Tee

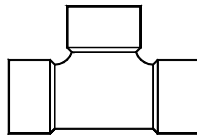
Hub x Hub x Hub



SDR 35				SDR 26		
Size	Part Number	List Price	UPC 695783	Part Number	List Price	UPC 695783
4x4	15760	6.64	157609	13060	P.O.A.	130602
6x4	15761	25.86	157616	13061	77.45	130619
6x6	15762	26.44	157623	13062	97.84	130626
8x4	15763	57.87	157630	13063	110.09	130633
8x6	15764	71.60	157647	13064	125.87	130640
8x8	15765	107.94	157654	13065	154.95	130657
10x4	15766	194.60	157661	13066	280.14	130664
10x6	15767	223.99	157678	13067	284.67	130671
10x8	15768	280.53	157685	13068	450.67	130688
10x10	15769	338.47	157692	13069	462.60	130695
12x4	15770	271.78	157708	13070	342.61	130701
12x6	15771	293.25	157715	13071	360.97	130718
12x8	15772	349.39	157722	13072	495.42	130725
12x10	15773	375.04	157739	13073	580.89	130732
12x12	15774	507.79	157746	13074	664.94	130749
15x4	15775	399.91	157753	13075	556.05	130756
15x6	15776	461.84	157760	13076	598.83	130763
15x8	15777	502.34	157777	13077	644.74	130770
15x10	15778	533.03	157784	13078	717.85	130787
15x12	15779	647.27	157791	13079	847.03	130794
15x15	15780	785.67	157807	13080	1100.14	130800
18x4	15781	1020.51	157814	13081	1403.21	130817
18x6	15782	1056.37	157821	13082	1450.92	130824
18x8	15783	1105.08	157838	13083	1515.75	130831
18x10	15784	1148.99	157845	13084	1574.04	130848
18x12	15785	1181.30	157852	13085	1617.18	130855
18x15	15786	1260.56	157869	13086	1722.25	130862
18x18	15787	1333.01	157876	13087	1818.64	130879
21x4	15788	1449.92	157883	13088	P.O.A.	130886
21x6	15789	1557.92	157890	13089	P.O.A.	130893
21x8	15790	1708.24	157906	13090	P.O.A.	130909
21x10	15791	1803.37	157913	13091	P.O.A.	130916
21x12	15792	1935.52	157920	13092	P.O.A.	130923
21x15	15793	2164.56	157937	13093	P.O.A.	130930
21x18	15794	2460.86	157944	13094	P.O.A.	130947
21x21	15795	3035.48	157951	13095	P.O.A.	130954
24x4	15796	2221.90	157968	13096	P.O.A.	130961
24x6	15797	2740.19	157975	13097	P.O.A.	130978
24x8	15798	2815.99	157982	13098	P.O.A.	130985
24x10	15799	2844.41	157999	13099	P.O.A.	130992
24x12	15800	2906.94	158002	13100	P.O.A.	131005
24x15	15801	2929.22	158019	13101	P.O.A.	131012
24x18	15802	4041.03	158026	13102	P.O.A.	131029
24x21	15803	4742.78	158033	13103	P.O.A.	131036
24x24	15804	5646.55	158040	13104	P.O.A.	131043

Two-Way Cleanout Tee

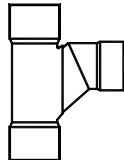
Hub x Hub x Hub



SDR 35						
Size	Part Number	List Price	UPC 695783	Part Number	List Price	UPC 695783
4x4	16470	18.24	164706	X		
6x6	16471	400.78	164713			

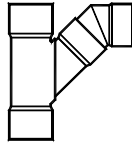
Sanitary Tee

Hub x Hub x Hub

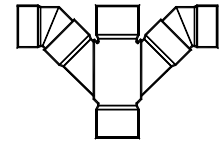


SDR 35				SDR 26		
Size	Part Number	List Price	UPC 695783	Part Number	List Price	UPC 695783
4x4	16480	10.19	164805	13597	P.O.A.	135973
6x4	16481	52.93	164812	13598	77.83	135980
6x6	16482	69.92	164829	13599	96.37	135997
8x4	16483	69.15	164836	13600	88.95	136000
8x6	16484	77.92	164843	13601	114.91	136017
8x8	16485	164.97	164850	13602	266.93	136024

Tee-Wye
(Combination)
Hub x Hub x Hub



Double Tee-Wye
(Double Combination)
Hub x Hub x Hub x Hub



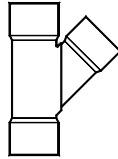
Size	SDR 35			SDR 26		
	Part Number	List Price	UPC 695783	Part Number	List Price	UPC 695783
4x4	15892	15.38	158927	13192	P.O.A.	131920
6x4	15893	59.32	158934	13193	114.11	131937
6x6	15894	78.29	158941	13194	97.91	131944
8x4	15895	77.45	158958	13195	138.37	131951
8x6	15896	107.87	158965	13196	284.87	131968
8x8	15897	188.40	158972	13197	253.26	131975
10x4	15898	247.87	158989	13198	290.01	131982
10x6	15899	286.78	158996	13199	445.82	131999
10x8	15900	445.05	159009	13200	675.17	132002
10x10	15901	540.82	159016	13201	319.15	132019
12x4	15902	298.05	159023	13202	343.38	132026
12x6	15903	339.69	159030	13203	700.79	132033
12x8	15904	549.33	159047	13204	744.92	132040
12x10	15905	599.31	159054	13205	881.00	132057
12x12	15906	704.82	159061	13206	503.06	132064
15x4	15907	448.68	159078	13207	544.65	132071
15x6	15908	505.31	159085	13208	591.65	132088
15x8	15909	586.49	159092	13209	537.87	132095
15x10	15910	656.83	159108	13210	821.96	132101
15x12	15911	749.74	159115	13211	658.47	132118
15x15	15912	950.42	159122	13212	1189.72	132125
18x4	15913	1077.73	159139	13213	1328.66	132132
18x6	15914	1118.70	159146	13214	1349.54	132149
18x8	15915	1182.69	159153	13215	1429.28	132156
18x10	15916	1241.75	159160	13216	1550.45	132163
18x12	15917	1272.98	159177	13217	1592.11	132170
18x15	15918	1359.70	159184	13218	1699.62	132187
18x18	15919	1432.56	159191	13219	1793.31	132194
21x4	15920	1617.41	159207	13220	P.O.A.	132200
21x6	15921	1660.06	159214	13221	P.O.A.	132217
21x8	15922	1736.25	159221	13222	P.O.A.	132224
21x10	15923	2105.47	159238	13223	P.O.A.	132231
21x12	15924	2251.14	159245	13224	P.O.A.	132248
21x15	15925	2514.82	159252	13225	P.O.A.	132255
21x18	15926	2594.57	159269	13226	P.O.A.	132262
21x21	15927	2670.86	159276	13227	P.O.A.	132279
24x4	15928	2546.25	159283	13228	P.O.A.	132286
24x6	15929	2693.45	159290	13229	P.O.A.	132293
24x8	15930	2783.48	159306	13230	P.O.A.	132309
24x10	15931	3017.72	159313	13231	P.O.A.	132316
24x12	15932	3073.20	159320	13232	P.O.A.	132323
24x15	15933	3194.63	159337	13233	P.O.A.	132330
24x18	15934	3985.44	159344	13234	P.O.A.	132347
24x21	15935	4779.16	159351	13235	P.O.A.	132354
24x24	15936	5872.39	159368	13236	P.O.A.	132361

Size	SDR 35			SDR 26		
	Part Number	List Price	UPC 695783	Part Number	List Price	UPC 695783
4x4	16024	P.O.A.	160241	13324	P.O.A.	133245
6x4	16025	106.61	160258	13325	141.80	133252
6x6	16026	185.33	160265	13326	246.48	133269
8x4	16027	168.76	160272	13327	224.47	133276
8x6	16028	245.49	160289	13328	326.50	133283
8x8	16029	364.06	160296	13329	484.18	133290
10x4	16030	289.88	160302	13330	385.53	133306
10x6	16031	348.39	160319	13331	463.38	133313
10x8	16032	525.22	160326	13332	698.53	133320
10x10	16033	765.06	160333	13333	1017.51	133337
12x4	16034	333.55	160340	13334	443.62	133344
12x6	16035	457.63	160357	13335	608.65	133351
12x8	16036	587.01	160364	13336	780.71	133368
12x10	16037	974.52	160371	13337	1296.14	133375
12x12	16038	1245.92	160388	13338	1657.09	133382
15x4	16039	678.28	160395	13339	902.14	133399
15x6	16040	817.33	160401	13340	1087.06	133405
15x8	16041	974.87	160418	13341	1296.57	133412
15x10	16042	1283.84	160425	13342	1707.50	133429
15x12	16043	1601.18	160432	13343	2129.58	133436
15x15	16044	1881.89	160449	13344	2502.92	133443
18x4	16045	1275.42	160456	13345	1696.28	133450
18x6	16046	1373.89	160463	13346	1827.30	133467
18x8	16047	1575.80	160470	13347	2095.79	133474
18x10	16048	1883.09	160487	13348	2504.54	133481
18x12	16049	2131.34	160494	13349	2834.69	133498
18x15	16050	2681.36	160500	13350	3566.20	133504
18x18	16051	3305.73	160517	13351	4396.66	133511
21x4	16052	1574.60	160524	13352	P.O.A.	133528
21x6	16053	1734.40	160531	13353	P.O.A.	133535
21x8	16054	2059.05	160548	13354	P.O.A.	133542
21x10	16055	3144.53	160555	13355	P.O.A.	133559
21x12	16056	3501.53	160562	13356	P.O.A.	133566
21x15	16057	4641.98	160579	13357	P.O.A.	133573
21x18	16058	5022.65	160586	13358	P.O.A.	133580
21x21	16059	7180.15	160593	13359	P.O.A.	133597
24x4	16060	2421.88	160609	13360	P.O.A.	133603
24x6	16061	2719.46	160616	13361	P.O.A.	133610
24x8	16062	2863.75	160623	13362	P.O.A.	133627
24x10	16063	4523.50	160630	13363	P.O.A.	133634
24x12	16064	4605.09	160647	13364	P.O.A.	133641
24x15	16065	4997.47	160654	13365	P.O.A.	133658
24x18	16066	6339.01	160661	13366	P.O.A.	133665
24x21	16067	8276.23	160678	13367	P.O.A.	133672
24x24	16068	9249.91	160685	13368	P.O.A.	133689

Spigot configurations available. Contact factory for pricing.

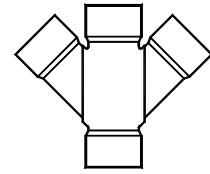
Wye

Hub x Hub x Hub



Double Wye

Hub x Hub x Hub x Hub



Size	SDR 35			SDR 26		
	Part Number	List Price	UPC 695783	Part Number	List Price	UPC 695783
4x4	16090	8.81	160906	13390	P.O.A.	133900
6x4	16091	32.57	160913	13391	90.65	133917
6x6	16092	37.36	160920	13392	P.O.A.	133924
8x4	16093	70.22	160937	13393	110.16	133931
8x6	16094	83.58	160944	13394	140.20	133948
8x8	16095	124.90	160951	13395	200.18	133955
10x4	16096	190.57	160968	13396	229.82	133962
10x6	16097	217.38	160975	13397	237.25	133979
10x8	16098	323.39	160982	13398	355.88	133986
10x10	16099	369.63	160999	13399	452.28	133993
12x4	16100	286.15	161002	13400	326.23	134006
12x6	16101	314.48	161019	13401	371.60	134013
12x8	16102	414.22	161026	13402	493.02	134020
12x10	16103	501.80	161033	13403	600.56	134037
12x12	16104	592.77	161040	13404	641.34	134044
15x4	16105	429.13	161057	13405	463.40	134051
15x6	16106	497.42	161064	13406	556.11	134068
15x8	16107	610.24	161071	13407	699.74	134075
15x10	16108	710.29	161088	13408	745.15	134082
15x12	16109	797.79	161095	13409	830.43	134099
15x15	16110	1046.18	161101	13410	1182.60	134105
18x4	16111	974.65	161118	13411	1249.35	134112
18x6	16112	988.14	161125	13412	1264.17	134129
18x8	16113	1032.23	161132	13413	1308.65	134136
18x10	16114	1148.99	161149	13414	1468.08	134143
18x12	16115	1181.30	161156	13415	1579.30	134150
18x15	16116	1284.76	161163	13416	1690.52	134167
18x18	16117	1554.69	161170	13417	2194.73	134174
21x4	16118	1541.62	161187	13418	P.O.A.	134181
21x6	16119	1655.09	161194	13419	P.O.A.	134198
21x8	16120	1871.05	161200	13420	P.O.A.	134204
21x10	16121	2113.68	161217	13421	P.O.A.	134211
21x12	16122	2288.74	161224	13422	P.O.A.	134228
21x15	16123	2656.16	161231	13423	P.O.A.	134235
21x18	16124	3134.22	161248	13424	P.O.A.	134242
21x21	16125	4112.15	161255	13425	P.O.A.	134259
24x4	16126	2219.82	161262	13426	P.O.A.	134266
24x6	16127	2599.00	161279	13427	P.O.A.	134273
24x8	16128	2812.44	161286	13428	P.O.A.	134280
24x10	16129	2844.41	161293	13429	P.O.A.	134297
24x12	16130	2906.94	161309	13430	P.O.A.	134303
24x15	16131	2929.22	161316	13431	P.O.A.	134310
24x18	16132	4164.32	161323	13432	P.O.A.	134327
24x21	16133	4578.77	161330	13433	P.O.A.	134334
24x24	16134	5046.60	161347	13434	P.O.A.	134341

Size	SDR 35			SDR 26		
	Part Number	List Price	UPC 695783	Part Number	List Price	UPC 695783
4x4	16222	P.O.A.	162221	13522	P.O.A.	135225
6x4	16223	75.75	162238	13523	140.89	135232
6x6	16224	105.82	162245	13524	153.19	135249
8x4	16225	127.56	162252	13525	163.13	135256
8x6	16226	155.95	162269	13526	207.59	135263
8x8	16227	189.55	162276	13527	389.28	135270
10x4	16228	276.78	162283	13528	396.67	135287
10x6	16229	299.81	162290	13529	415.21	135294
10x8	16230	398.21	162306	13530	589.46	135300
10x10	16231	414.30	162313	13531	663.57	135317
12x4	16232	320.46	162320	13532	500.48	135324
12x6	16233	409.03	162337	13533	533.83	135331
12x8	16234	460.00	162344	13534	722.91	135348
12x10	16235	623.76	162351	13535	830.43	135355
12x12	16236	680.69	162368	13536	900.85	135362
15x4	16237	665.22	162375	13537	726.60	135379
15x6	16238	768.73	162382	13538	826.70	135386
15x8	16239	847.85	162399	13539	955.88	135393
15x10	16240	933.06	162405	13540	1030.61	135409
15x12	16241	1035.91	162412	13541	1293.83	135416
15x15	16242	1097.87	162429	13542	1693.57	135423
18x4	16243	1262.31	162436	13543	1608.99	135430
18x6	16244	1325.31	162443	13544	1694.23	135447
18x8	16245	1448.79	162450	13545	1853.65	135454
18x10	16246	1651.08	162467	13546	P.O.A.	135461
18x12	16247	1775.93	162474	13547	P.O.A.	135478
18x15	16248	1897.33	162481	13548	P.O.A.	135485
18x18	16249	2261.53	162498	13549	P.O.A.	135492
21x4	16250	1560.91	162504	13550	P.O.A.	135508
21x6	16251	1685.77	162511	13551	P.O.A.	135515
21x8	16252	1932.07	162528	13552	P.O.A.	135522
21x10	16253	2969.15	162535	13553	P.O.A.	135539
21x12	16254	3218.92	162542	13554	P.O.A.	135546
21x15	16255	4145.01	162559	13555	P.O.A.	135553
21x18	16256	4290.70	162566	13556	P.O.A.	135560
21x21	16257	5827.31	162573	13557	P.O.A.	135577
24x4	16258	2389.88	162580	13558	P.O.A.	135584
24x6	16259	2670.86	162597	13559	P.O.A.	135591
24x8	16260	2736.76	162603	13560	P.O.A.	135607
24x10	16261	4172.76	162610	13561	P.O.A.	135614
24x12	16262	4259.50	162627	13562	P.O.A.	135621
24x15	16263	4290.70	162634	13563	P.O.A.	135638
24x18	16264	5607.07	162641	13564	P.O.A.	135645
24x21	16265	6923.39	162658	13565	P.O.A.	135652
24x24	16266	7322.10	162665	13566	P.O.A.	135669

Spigot configurations available. Contact factory for pricing.

TERMS

Two percent discount for cash if paid no later than 10 days following date of invoice. Purchaser should inquire about the trade and cash discount in effect at any particular time.

Purchaser agrees to pay a finance charge of 1½ percent per month (18 percent annual rate) on all past due accounts. If purchaser's account is past due and is placed with an attorney for collection or suit, the purchaser agrees to pay attorney and court fees. All orders placed by accounts with a past due balance will be placed on credit hold until the account is brought current or other arrangements are made.

FREIGHT

All sewer goods are sold F.O.B. point of shipment with full freight allowed to all shipping points within the United States except Alaska and Hawaii on net order value of \$1,500.00 or more.

Seller shall not be liable for failure to deliver or delays in delivery due to causes beyond Seller's control or the control of its suppliers and carriers.

MINIMUM ORDER

Orders must be at least \$100.00 net to be accepted.

CANCELLATION

Nonstandard or specially produced fittings cannot be cancelled once production has begun. Large quantities of a single product may require a non-cancelable agreement.

RETURNED GOODS

Goods will not be accepted for return without a Return Goods Authorization issued by Macon Plastics, Inc. A restocking charge and freight costs of returned goods (plus out freight if applicable) will be assessed. Special fittings or unreasonably large quantities are non-returnable. Fittings must be clean, current design and in resalable condition.

LIMITED WARRANTY

Since the use of this product is beyond the control of the seller, liability of the seller shall be limited to replacement of product.

Macon Plastics, Inc. warrants that its products are manufactured free of defects in material and workmanship for a period of one year from date of purchase.

The limit of liability for failure of any of the products to meet foregoing warranties or breach of any warranty, express, implied or statutory shall be to supply an equivalent amount of product or refund of purchase price for any products returned to it within thirty (30) days of failure and found by Macon Plastics, Inc. to be defective.

This warranty does not apply to a product that has been subjected to; (a) improper storage or installation other than in accordance with ASTM D2321; (b) accident, damage, abuse or misuse; (c) abnormal or unusual operating conditions or applications; (d) operating conditions or applications above the rated capacity for the product; (e) operating conditions or applications not made known to Macon Plastics, Inc. prior to the date of the sale of the product; or (f) a purpose of application in any way different from that for which the product was designed.

Due to the widely varying conditions under which these products are used or installed, if these products are not installed within current industry standards, Macon Plastics, Inc. offers no warranty as to the length of service or suitability for any particular purpose of the products. In no event shall Macon Plastics, Inc. be liable for incidental or consequential damages.

Any action for breach of warranty must be brought within twelve (12) months from the date of delivery. Macon Plastics, Inc. retains the right to make changes or improvements from time to time in their products.

DISCLAIMER OF OTHER WARRANTIES

The warranty provided above is strictly limited to its terms and is in lieu of all other warranties, express, implied and statutory. Macon Plastics, Inc. specifically disclaims any implied warranties of merchantability or fitness for particular purpose.

Purchaser specifically understands and agrees that Macon Plastics, Inc., its successors, assigns, directors, officers, agents and employees shall not be liable in tort, whether based on negligence, strict liability, or any other theory of tort liability, for any action or failure to act in respect to the manufacture, preparation for sale, sale, delivery, or use of Macon Plastics, Inc.'s products. It is the parties' intent to absolve and protect Macon Plastics, Inc. and Macon Plastics, Inc.'s successors, assigns, directors, officers, agents and employees from any and all tort liability.

Purchaser expressly agrees that its sole and exclusive remedy for breach of warranty set forth above, for any tort related conduct, or for any other cause of action, shall be the remedies set forth above.

Purchaser further specifically understands and agrees that, except provided, no remedy shall be available to purchaser, including, but not limited to claims for incidental, consequential, special or punitive damages, for any cause whatsoever, or injury to or death of persons or damage to property or any other consequential economic or incidental loss.

Under no circumstances will Macon Plastics, Inc. be liable for loss of anticipated profits or any other loss caused by reason of the non-operation of, or the increased expense of operation caused by Macon Plastics, Inc.'s products. This exclusion shall apply to all claims, whether sounding in tort, contract or otherwise and shall apply to all damages.

CLAIMS FOR SHORTAGE OR DAMAGE

Shortage claims must be made within ten (10) days from receipt of goods.

Claims for lost shipments, goods damaged in transit, or error in shipment must be made by consignee with the delivering carrier.

NOTICE

Possession of this price list is not an offer to sell. All orders are subject to acceptance by Macon Plastics, Inc. Prices shown on this price sheet supersede all previous issues, and are subject to change without notice.

Orders shall not be binding until approved at Seller's office in Macon, Georgia.

This agreement shall be governed in accordance with the laws of the State of Georgia, therefore all litigation will take place in the State of Georgia.